

BUSINESS REQUIREMENTS SPECIFICATION

(BRS)

Business Domain: Travel/Tourism Domain

Business Process: Experience Programs Information Exchange Process

Title: Experience Programs Technical Artefacts Project

UN/CEFACT Forum: International Trade Procedures

Version: D 0.95

Status: Draft

Date Issued : December 17, 2021

Document change history log

| Date of change | Version | Paragraph changed | Summary of changes |
|----------------|---------|-------------------|--------------------|
| April 27, 2021 | D 0.8 | | |
| June 15, 2021 | D 0.85 | | |
| Oct. 12, 2021 | D 0.9 | | |
| Dec. 17, 2021 | D.0.95 | | |
| | | | |
| | | | |
| | | | |
| | | | |
| | | | |
| | | | |
| | | | |
| | | | |
| | | | |
| | | | |
| | | | |

Table of contents

| | |
|---|----|
| Document change history log | 2 |
| Table of Contents | 3 |
| 1. Preamble | 4 |
| 2. References | 5 |
| 3. Objective | 6 |
| 4. Scope | 7 |
| 5. Business requirements | 8 |
| 5.1. Business requirements views | 8 |
| 5.2 Business process elaboration – Use case diagram | 8 |
| 5.2.1. Process Scope | 8 |
| 5.2.2. Use case diagram: EPs data exchange | 8 |
| 5.3. Information flow definition – Activity diagram | 9 |
| 5.4. Information model definition – Class diagram | 11 |
| 5.5. Business rules | 15 |
| 5.5.1. BIEs diagrams..... | 15 |
| 5.6. Definition of business terms | 21 |
| 5.7. Core components developed..... | 22 |

1. Preamble

After the Green Paper on Sustainable Tourism -Experience Programs was published by UN/CEFACT in April, 2019, the working experts of Travel/ Tourism Domain found it necessary to develop the technical artefacts on experience programs (abbr. EPs, which could be plural or sometimes singular notwithstanding its form) to make their actual trade available globally through their standardization activities. The project named as Experience Programs Technical Artefacts was approved by the Bureau in September, 2019

Much discussion had been made before the Green Paper was created, especially, on EPs or what they are and should be. They could be regarded as newly emerging travel related products in one aspect, and in the other, they could be service products developed even by non-travel related persons or corporations. In either case they are or will be created in local regions to vitalize their regional economy. And at the same time it is expected that they could improve the QoL (Quality of Life) of people living in local areas or visitors coming there. Local people are and might be keen enough to sustain their environments by themselves.

It was also understood that any of the conventional tours, such as sightseeing tours in urban or rural areas, optional tours, etc. could not exist unless they should be developed in the same concept as EPs. Therefore this project makes no difference among them whether they are EPs or conventional tours, etc., which means conventional tours are a part of EPs. This is shown in Figure 1.

| <i>EPs</i> | <i>Past</i> | <i>Present</i> | <i>New perspectives</i> |
|------------------------------|---|----------------|--|
| Conventional tours | <ul style="list-style-type: none"> • Sightseeing tours • Optional tours (optional add-ons to basic tour packages) • Tours based on eco or green tourism | | <ul style="list-style-type: none"> • To vitalize regions • To sustain environments • To improve Quality of Life (QOL) |
| New trends in tourism | <ul style="list-style-type: none"> • Agriculture tours • Industry tours • Health-related tours • Sports tours • Social tours • Any kind of activity tours | | |

Figure 1: EPs comparison of conventional tours and new trends in tourism

2. References

- UMM Meta Model Core Module (Candidate for 2.0) 2009-01-30
- UMM Meta Model Foundation Module (Candidate for 2.0) 2009-01-30
- Core Components Technical Specification-Part 8 of the ebXML Framework V2.01(15 Nov. 2003)
- Core Components Technical Specification Technical Corrigendum V2.01, 12 Feb. 2007
- Core Components Data Type Catalogue V2.1 2008-04-08
- XML Naming and Design Rules 2.0 17 Feb., 2006
- UML Profile for Core Components, V1.0, Final Specification, 2008-01-16
- UN/CEFACT CC Library Version 2012 A
- UN/CEFACT Business Requirements Specification Version 1.5 (CEFACT/ICG/005)
- UN/CEFACT Requirements Specification Mapping (Documentation Template Guidelines) Version2.0

3. Objective

The objective of this document is to make EPs available and traded not only locally, but also globally. To standardize the exchanged data applied to trade EPs between trading parties is primarily dealt with. And data exchanged are described in this document and their standardization process will be defined in here. The trading parties could be defined as a buying party of EPs, such as a consumer, a corporate person, an intermediary or a travel agent (hereinafter a buyer) and a supplying party of EPs, such as an EPs supplier, an information supplier, or an intermediary, etc. (hereinafter a seller).

As EPs have been and will be usually created, and traded locally in a small scale, EPs suppliers desire to have any good means to trade them globally and to welcome global visitors to their regions. They have a confidence that their products will surely meet the needs of the visitors whether they are local or global. Yet at the same time they want to keep their own environments sustainable as best as possible. Therefore they need to exchange information for this purpose between them and buying parties.

It is understood by the experts when to develop EPs technical artefacts, the working results of SLH (Small scaled Lodging House) related projects will be reutilized as best as possible, because they are those developed by Travel/Tourism Domain for the trade of small scaled lodging house products based on the eBXML specifications, the major difference of which is the kind of traded product. But at the same time it is well understood that EPs needs a lot of new data entities communicated between new trading parties.

And the concept of UN/SDGs (Sustainable Development Goals) will be and should be well considered when to create EPs. Necessary data on sustainability information will surely be communicated between trading parties, which necessitates new business data.

4. Scope

In this document what EPs are and how the business is performed by using what data are described. And then to facilitate EPs trade electronically between trading parties, basic diagrams and required business data are shown, which will then be detailed in the document, Requirement Specification Mapping, for the use of electronic handling.

The basic frame of the document comes from the outputs of SLH (Small scaled Lodging House) related projects, which would be amended to meet the needs when they may not appropriate.

For EPs trade between business parties, such functions as searching, reserving, cancelling, changing, paying, etc. processes might be needed. These ones are the same as the ones of SLH related processes. But EPs suppliers offer their customers quite diversified products, which may need more new data to take care of in this document than those of SLH related processes.

Relevant codes necessary for the use of EPs data in processes will be provided in the specified code list. And Technical Implementation Guide in order to describe how the data are composed and used by system developers will also be provided in a separate document.

The use of these documents and relevant list developed in the project will surely be provided any system developers to trade EPs.

5. Business requirements

5.1. Business requirements views

EPs process and relevant data are described in this document to trade EPs between business parties.

5.2. Business process elaboration – Use case diagram

5.2.1. Process Scope

This process details the request and response of information used for EPs trade between a seller and a buyer. Any buyer can send the data to a seller for this purpose, and receive a response from the seller, if the requesting data are valid.

5.2.2. Use case: EPs information exchange

The use case diagram in a wider sense of EPs trade is shown in Figure 2. Each party of a seller or a buyer could either be an individual or a corporate person, who could play multiple roles. For example, a buyer could be a customer, a consumer, a travel agent, an intermediary, a payer, etc. and a seller could be an owner, a provider, an operator, a coordinator, a guide, a travel agent, an intermediary or sales company, a payee, a financial service provider, an insurance service provider, an online payment gateway, etc. It is noted that any person or corporate of any business area, who wants to serve consumers could create EPs related products or even a single one and be a seller of that or those. This is not limited within conventional travel related business area.

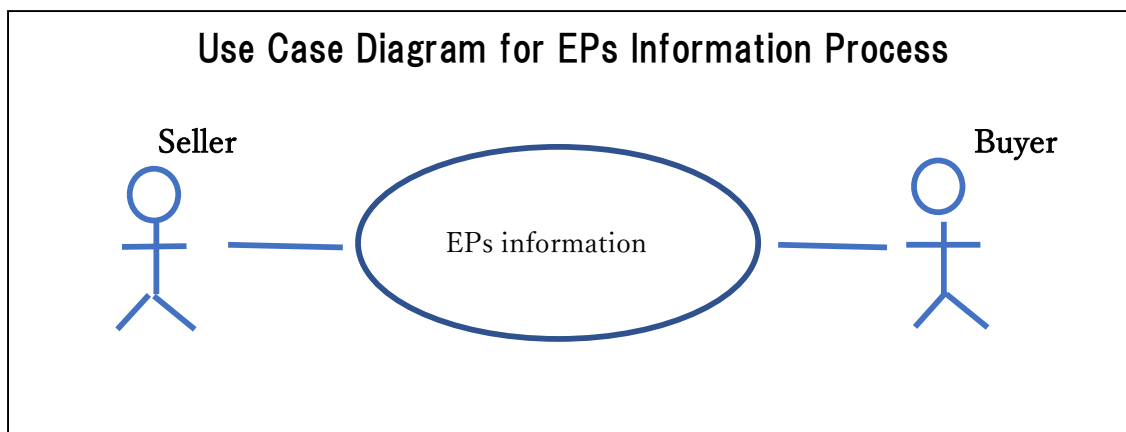


Figure 2 Use case diagram ---EPs information exchange

In order to trade EPs, a variety of EPs related information could be exchanged between a buyer and a seller. It could be a request or a response of information, such as of EPs product booking, its related price and payment, an itinerary or an insurance document, a guide, and a lot other information. The table 1 shows the use case description.

Table1 Use case description – EPs information exchange

| | |
|-----------------------|---|
| Business process name | EPs Information Request and Response Message |
| Identifier | EPs Info REQ & RSP MSG |
| Actors | Buyer and Seller |
| Description | A buyer requests information from a seller.. |
| Pre-condition | A buyer knows to which seller the buyer could request his/her information needed. |
| Post-conditions | A buyer could confirm his information requested. |
| Scenario | EPs Information Request and Response |
| Remarks | A buyer or seller can either be a corporate or private person.. |

5.3. Information flow definition – Activity diagram

The corresponding activity diagram of the use case in chapter 5.2, is presented in Figure 2.

This diagram is between trading parties, or a buyer and a seller. Any buyer can send his request information to a seller as his request and receive the response information from the seller as the response. This process is in line with common practice used between trading parties, or a buyer and a seller, which is shown below..

Scenarios used here are depicted as in the following.

- EPs information requested by a buyer to a seller
- EPs information responded from the seller to the buyer

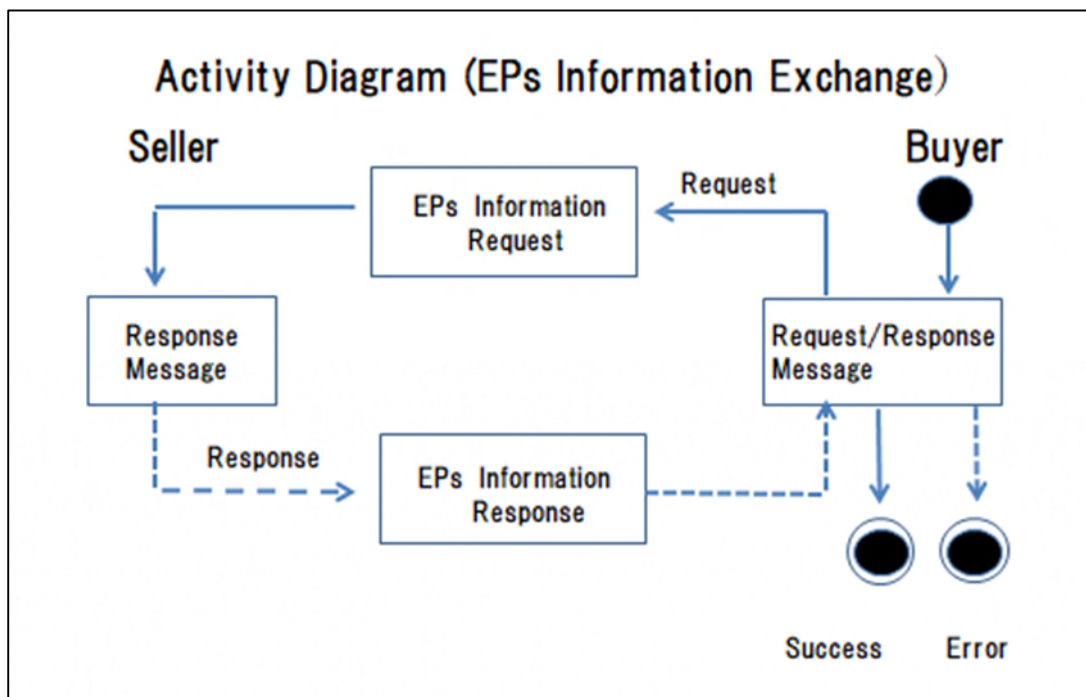


Figure 3. Activity diagram (EPs information requested and responded)

The activity diagram of EPs is described as in the Table 2.

Table 2. Activity diagram description between trading parties

| Categories | Description and Values |
|-------------------------|---|
| Business process | EPs information requested and responded between trading parties |
| Product Classification | EPs product or related information |
| Industry Classification | Not only travel/tourism industry but also any kind of industry, in which EPs could be developed and operated. |
| Geopolitical | Global |
| Official Constraint | None |
| Business Process Role | Roles of an EPs seller or a buyer |
| Supporting Role | There might be settlement function when to settle payment between business parties |
| System Capabilities | No limitations |

5.4. Information model definition – Class diagram (This chapter needs to be amended after the meeting scheduled on 17th Dec., 2021.)

The class diagrams for EPs information are developed in a manner that specify the cross industry reusable business information entities and the travel/ tourism reusable business information entities.

The technical artefacts developed by SLH related projects could be reused as best as possible in EPs Information exchange. There are some new classes created for the use of EPs information exchange.

The class diagrams for EPs Information Process are shown below in Figure 4 up to 8.

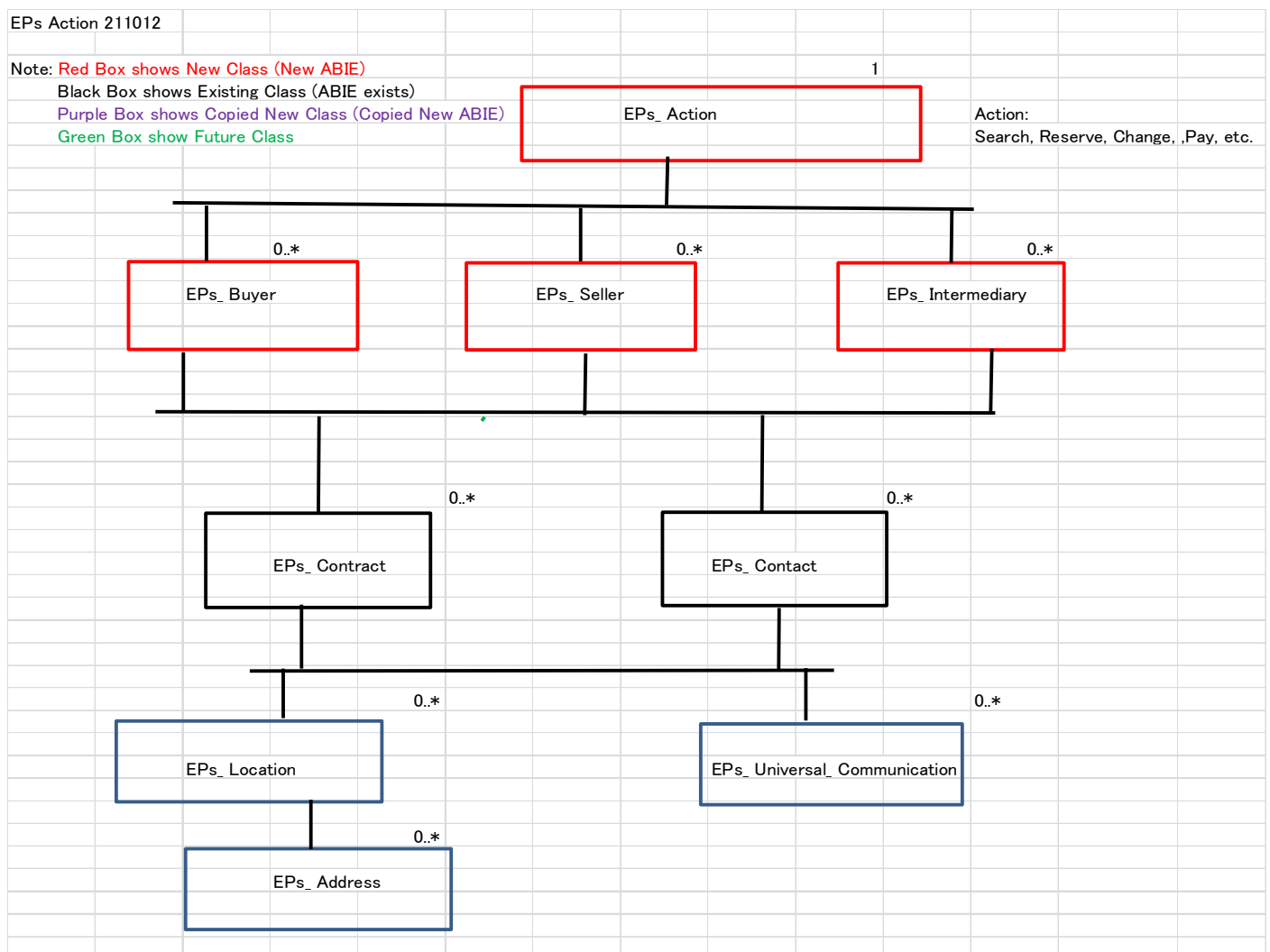


Figure 4. Message Consist Part class diagram

Among the holistic part of the class diagram the following parts of Class Diagrams are depicted to show their parts in Figure 5, 6, and 7.

Figure 5 below is Buyer side class diagram.

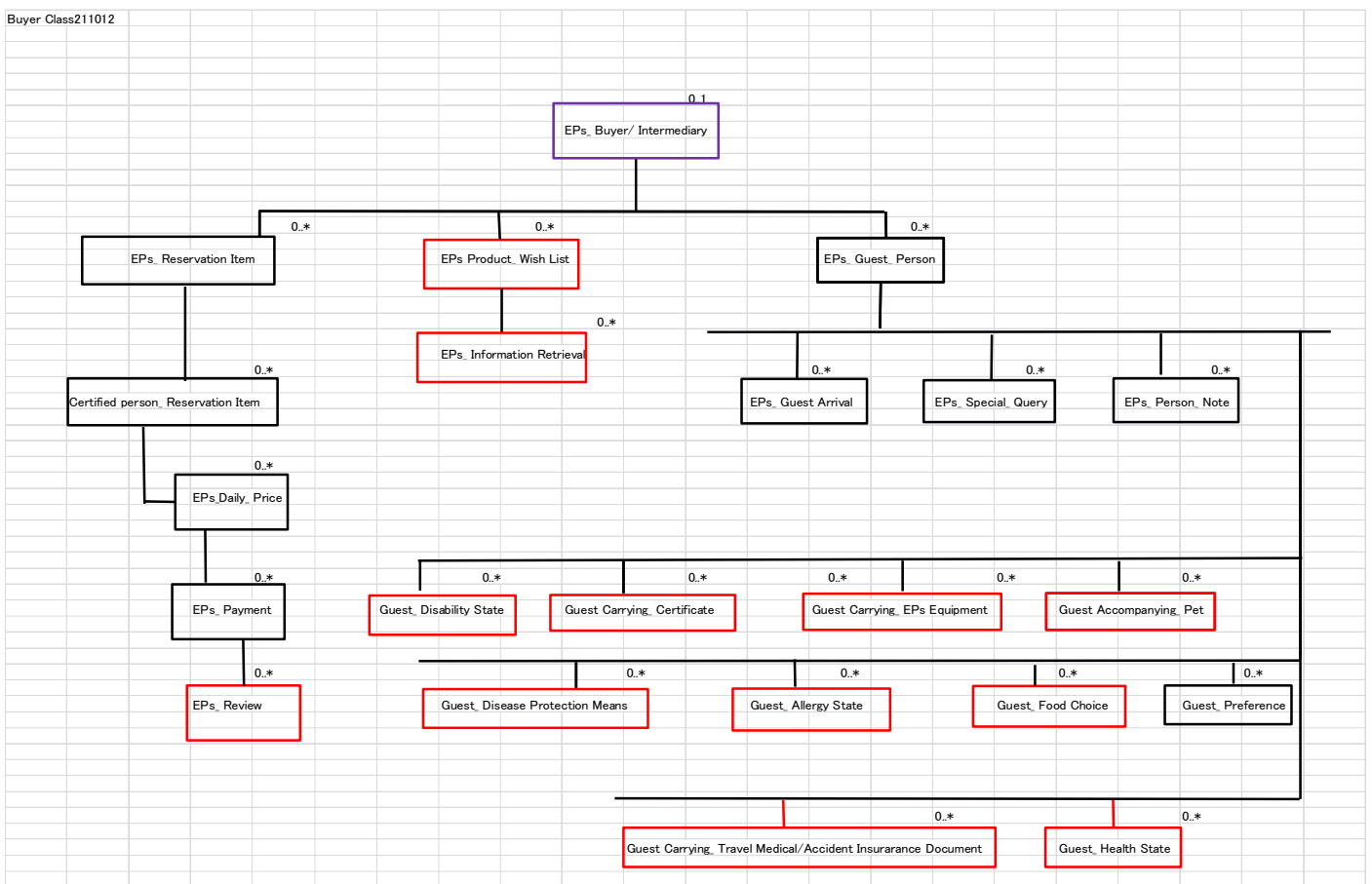


Figure 5. Buyer Part class diagram

And then Seller/Intermediary part class diagram

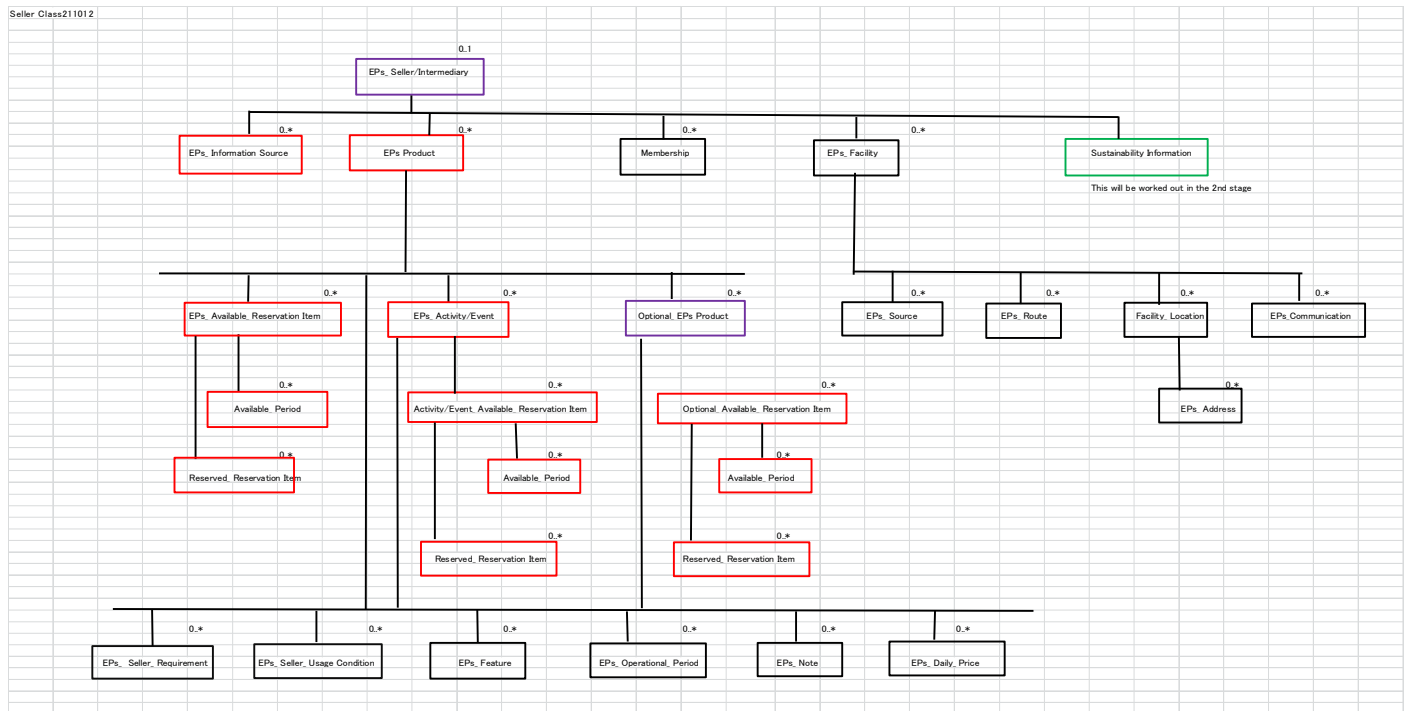


Figure 6. Seller/Intermediary Part class diagram

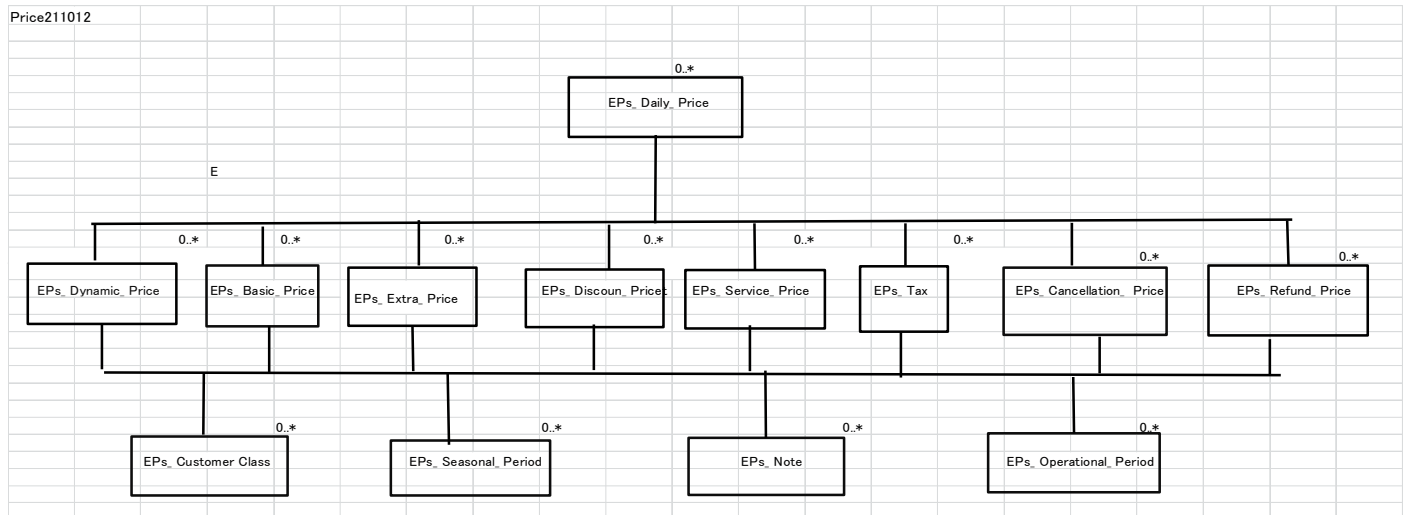


Figure 7. Daily_Price Part class diagram

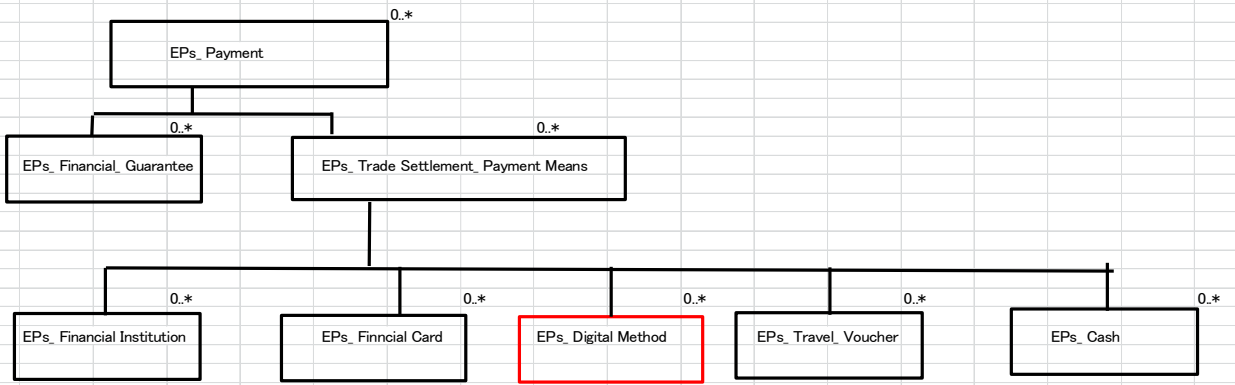


Figure 8. Payment Part class diagram

5.5. Business rules

In the activity diagram in Figure 2, a buyer may send request information as a request to a supplier to search, reserve, cancel, amend or pay and the supplier may send back the response information as his reply to the buyer. This transaction may sometimes require a prior contract between the trading parties.

5.5.1. BIEs diagrams **(This chapter has the input of work done by Gerhard san and will update again after the meeting on 17th Dec., 2021.)**

Below BIEs diagrams are shown in accordance to the above mentioned Class diagrams. The red characters are considered to be new classes or added as a new basic information entity. .

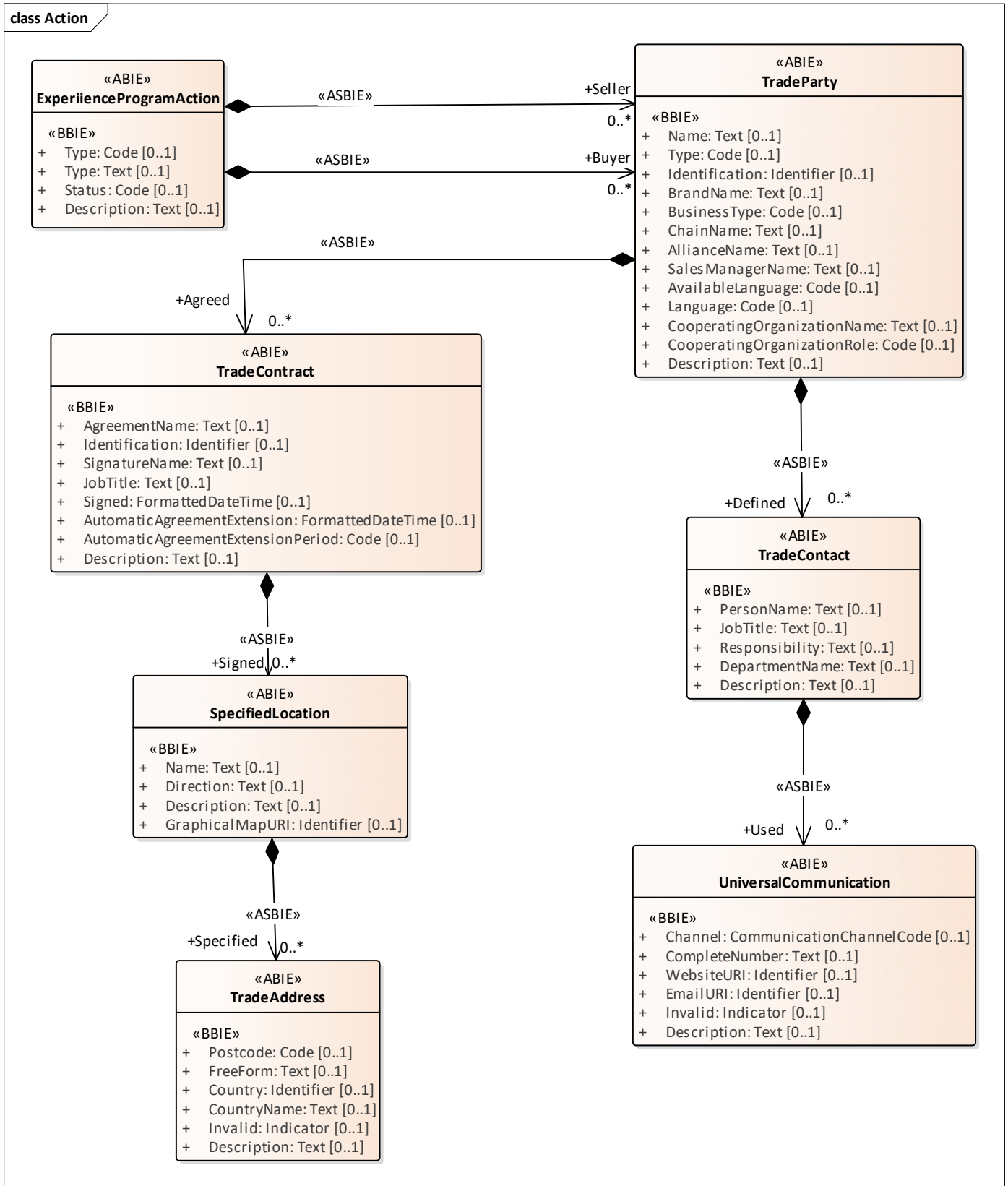


Figure 9. Message Consist Part BIEs diagram

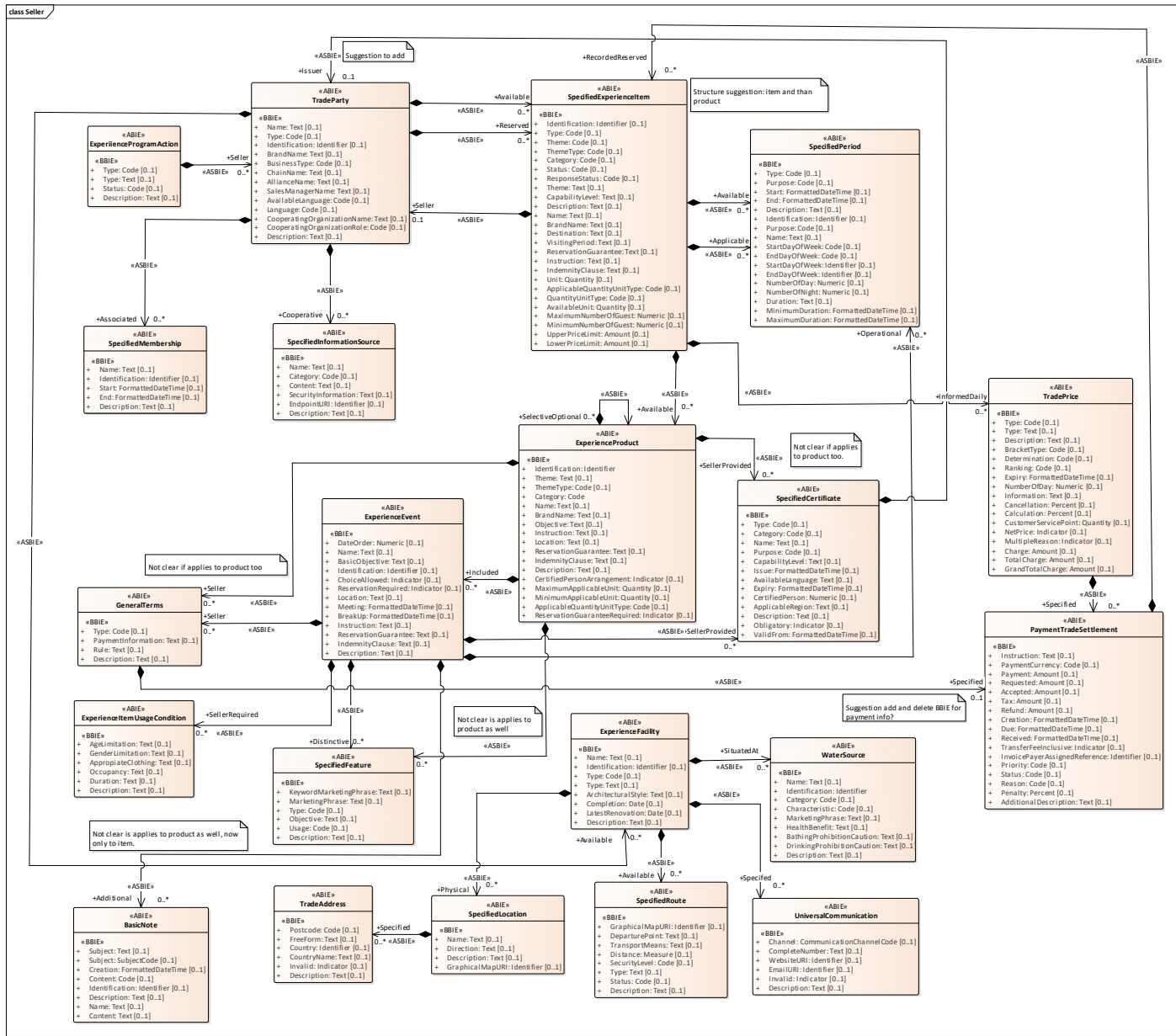


Figure 11. EPs_Seller/ Intermediary Part BIEs diagram

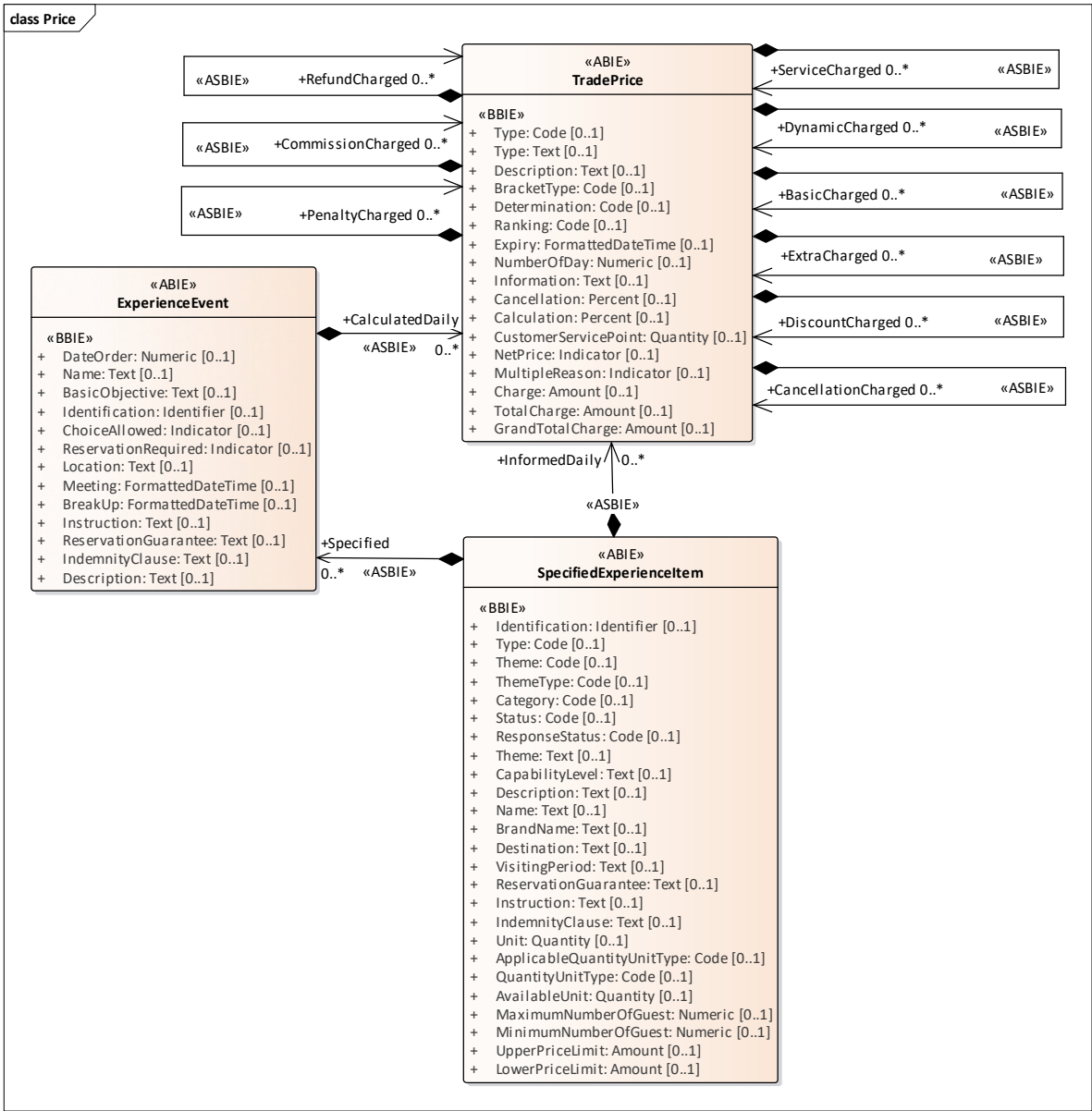


Figure 12. Daily_Price Part BIEs diagram

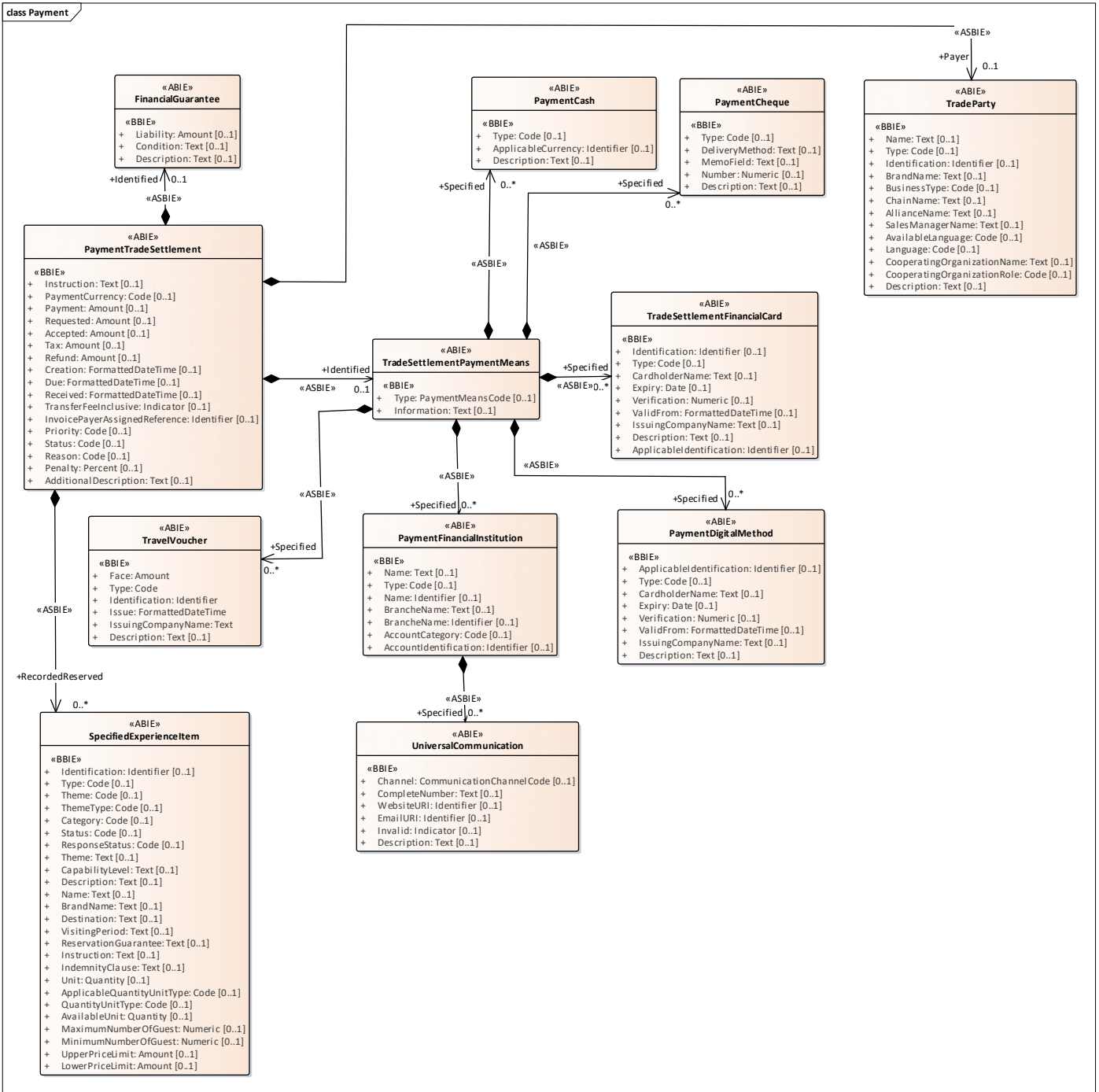


Figure 13. Payment Part BIEs diagram

5.6. Definition of Business terms

The definition of Business terms used in the EPs information process is shown in Table 3.

(This chapter should be amended.)

Table 3 Definition of Business terms

| Business term | Definition |
|-----------------------------|--|
| Experience Program/Programs | This is a specific category of tourism, in which a customer could experience any combination of local activities or events aiming to vitalize regions, to sustain environments, to improve quality of life, etc. |
| EPs | EPs is an abbreviation to represent, in general, Experience Program or Experience Programs, notwithstanding its word format. |
| EPs Product | A commercial service object of EPs supplied by any business owner/owners |
| EPs Product Activity/Event | Any fundamental trial or happening in an EPs Product |
| EPs Product Program | A series of activities or events in an EPs Product listed or shown sequentially |
| Optional EPs Product | An EPs Product provided a customer as an option only when to get the main EPs Product |
| EPs Action | Any business trading behavior related to EPs product or information, for example, search, reserve, cancel, pay, change, review, etc. |
| EPs Information Source | Any source of information related to EPs |
| Wish List | A pack of requested items or objects by a customer to a supplier/suppliers in order to get information or product |
| Food Choice | Choosing favorite or disliked food |
| Allergy | Any sensitive state incurred by food, drink, air, medicine, etc. |
| Guest Disabled State | Any body condition of a guest having some difficulty in moving |
| Travel Accident Insurance | An insurance applied to an accident occurred during travelling |
| Guest Review | Any comment/comments of a guest in relation to his/her product paid |
| Guide Licence | Business permit as a guide issued by a government or any authorized organization |

| | |
|--------------------------|--|
| Coordinator Licence | Business permit as a coordinator issued by a government or any authorized organization |
| Instructor Licence | Business permit as an instructor issued by a government or any authorized organization |
| Applicable Facility | A facility ready for use |
| Guest Health Condition | Health state of a guest |
| Guest Licence | Any licence acquired by the said guest |
| Guest Provided Equipment | An equipment taken by a guest, for example, a personal sledge for skiing, etc. |
| Guest Accompanied Pet | A pet taken together by a guest |
| Guest Manner | Any kind of manner a guest should better follow |
| Guest Disease Protection | Any protection a guest should take to prevent disease, such as washing hands, wearing a face mask,, taking a specific medicine, etc. |
| EPs Dynamic Price | A dynamic price applied to EPs |
| Refund Price | A price applicable to refund |
| EPs Digital Payment | A payment using digital technology in EPs |

5.7. Core components developed

Newly created Core Component list for EPs with the relevant Business Information Entity is shown below..

And the definition of each Core Component is also attached to the list.

(This chapter should be amended.)

Table 5. Core Components for EPs

| Business Information Entities | Core Components | Definition |
|--------------------------------------|------------------------|-------------------|
| EPs Action. Details | EPs Action | |
| Action_ Name [0..1] Text | Name. Text | |
| Action [0..1] Code | Action. Code | |

| | | |
|--|----------------------------|--|
| Action. Status [0..1] Code | Status. Code | |
| Description [0..1] Text | Description. Text | |
| EPs_ Buyer. Details | Buyer. Details | |
| Name [0..1] Text | Name. Text | |
| Type [0..1] Code | Type. Code | |
| Title [0..1] Code | Title. Code | |
| Identification [0..1] Identifier | Identification. Identifier | |
| Classification [0..1] Code | Classification. Code | |
| Role [0..1] Code | Role. Code | |
| Language [0..*] Code | Language. Code | |
| Description [0..1] Text | Description. Text | |
| EPs_ Supplier. Details | Supplier. Details | |
| Name [0..1] Text | Name. Text | |
| Identification [0..1] Identifier | Identification. Identifier | |
| Chain_ Name [0..1] Text | Name. Text | |
| Brand_ Name [0..1] Text | Name. Text | |
| Business Type [0..1] Code | Type. Code | |
| Association Membership_ Name [0..1] Text | Name. Text | |
| Alliance_ Name [0..1] Text | Name. Text | |
| Owner_ Name [0..1] Text | Name. Text | |
| Sales Manager_ Name [0..*] Text | Name. Text | |
| Travel Licence [0..1] Identifier | Travel Licence. Identifier | |
| Travel Licence_ Effective Area [0..1] Text | Effective Area. Text | |
| Cooperating Organization_ Name [0..1] Text | Name. Text | |

| | | |
|---|------------------------------|--|
| Cooperating Organization_ Role [0..1] Code | Role. Code | |
| Description [0..1] Text | Description. Text | |
| EPs_ Intermediary. Details | Intermediary. Details | |
| Name [0..1] Text | Name. Text | |
| Identification [0..1] Identifier | Identification. Identifier | |
| Chain_ Name [0..1] Text | Name. Text | |
| Brand_ Name [0..1] Text | Name. Text | |
| Business Type [0..1] Code | Business Type. Code | |
| Association Membership_ Name [0..1] Text | Name. Text | |
| Alliance_ Name [0..1] Text | Name. Text | |
| Owner_ Name [0..1] Text | Name. Text | |
| Sales Manager_ Name [0..*] Text | Name. Text | |
| Travel Licence [0..1] Identifier | Travel Licence. Identifier | |
| Travel Licence_ Issuing Organization [0..1] Text | Issuing Organization.Text | |
| Travel Licence_ Effective Area [0..1] Text | Effective Area. Text | |
| Cooperating Organization Name [0..*] Text | Name. Text | |
| Cooperating Organization_ Role [0..1] Code | Role. Code | |
| Description [0..1] Text | Description. Text | |
| EPs_ Wish List. Details | Wish List. Details | |
| Theme [0..1] Text | Theme. Text | |
| Destination [0..1] Text | Destination. Text | |

| | | |
|---|-------------------------------------|-----|
| Visiting Period [0..1] Text | Visiting Period. Text | |
| Uppermost_ Price [0..1] Amount | Price. Amount | |
| Lowermost_ Price [0..1] Amount | Price. Amount | |
| Maximum_ Number of Guest [0..1] Amount | Number of Guest. Amount | |
| Minimum_ Number of Guest [0..1] Amount | Number of Guest. Amount | |
| EPs Product_ Name [0..1] Text | Name. Text | |
| EPs Product_ Brand_ Name [0..1] Text | Name. Text | |
| Pet Accompanying Request [0..1] Indicator | Pet Accompanying Request. Indicator | |
| Disabled State [0..1] Text | Disabled State. Text | |
| Description [0..1] Text | Description. Text | |
| EPs_ Guest_ Person. Details | Person. Details | |
| Participating_ Number of Day [0..1] Numeric | Number of Day. Numeric | Add |
| Religious Belief [0..1] Text | Religious Belief. Text | Add |
| Special_ Query. Details | Query. Details | |
| Response Requested [0..1] Date Time | Response Requested. Date Time | Add |
| Guest_ Review. Details | Review. Details | |
| Positive_ Comment [0..1] Text | Comment. Text | |
| Negative_ Comment [0..1] Text | Comment. Text | |
| General_ Comment [0..1] Text | Comment. Text | |
| Description {0..12} Text | Description. Text | |
| Guest_ Food Choice. Details | Food Choice. Details | |
| Response Requested [0..1] Indicator | Response Requested. Indicator | |

| | | |
|---|---|--|
| Name [0..1] Text | Name. Text | |
| Type [0..1] Code | Type. Code | |
| Restriction [0..1] Text | Restriction. Text | |
| Description [0..1] Text | Description. Text | |
| Guest Allergy. Details | Guest Allergy. Details | |
| Response Requested [0..1] Indicator | Response Requested. Indicator | |
| Name [0..1] Text | Name. Text | |
| Type [0..1] Code | Type. Code | |
| Restriction [0..1] Text | Restriction. Text | |
| Description [0..1] Text | Description. Text | |
| Guest_ Disability State. Details | Disability State. Details | |
| Response Requested [0..1] Indicator | Response Requested. Indicator | |
| Name [0..1] Text | Name. Text | |
| Type [0..1] Code | Type. Code | |
| Required Supporting Device [0..*] Text | Required Supporting Device. Text | |
| Restriction [0..1] Text | Restriction. Text | |
| Description [0..1] Text | Description. Text | |
| Travel Accident Insurance. Details | Travel Accident Insurance. Details | |
| Response Requested [0..1] Indicator | Response Requested. Indicator | |
| Name [0..1] Text | Name. Text | |
| Valid From [0..1] Date Time | Valid From. Date Time | |
| Valid Until [0..1] Date Time | Valid Until. Date Time | |
| Description [0..1] Text | Description. Text | |
| EPs_ Information Source. Details | Information Source. Details | |
| EPs Source_ Name [0..1] Text | Name. Text | |

| | | |
|---|-----------------------------|--|
| URI [0..*] Identifier | URI. Identifier | |
| Description [0..1] Text | Description. Text | |
| EPs Product. Details | EPs Product. Details | |
| Type [0..1] Code | Type. Code | |
| Category [0..1] Code | Category. Code | |
| Brand_ Name [0..1] Text | Name. Text | |
| Name [0..1] Text | Name. Text | |
| Identification [0..1] Identifier | Identification. Identifier | |
| Theme [0..1] Text | Theme. Text | |
| Start [0..1] Date Time | Start. Date Time | |
| Day of Week [0..1] Code | Day of Week. Code | |
| End [0..1] Date Time | End. Date Time | |
| Day of Week [0..1] Code | Day of Week. Code | |
| Duration [0..1] Date Time | Duration. Date Time | |
| Maximum_ Duration [0..1] Date Time | Duration. Date Time | |
| Minimum_ Duration [0..1] Date Time | Duration. Date Time | |
| Guide_ Arrangement [0..1] Indicator | Arrangement. Indicator | |
| Coordinator_ Arrangement [0..1] Indicator | Arrangement. Indicator | |
| Instruction [0..*] Text | Instruction. Text | |
| Location [0..1] Text | Location. Text | |
| Maximum_ Applicable Unit [0..1] Quantity | Applicable Unit. Quantity | |
| Minimum_ Applicable Unit [0..1] Quantity | Applicable Unit. Quantity | |
| Applicable Unit [0..1] Code | Applicable Unit. Code | |

| | | |
|--|---|--|
| Reservation Guarantee Required [0..1] Indicator | Reservation Guarantee Required. Indicator | |
| Reservation Guarantee [0..1] Text | Reservation Guarantee. Text | |
| Indemnity Clause [0..1] Text | Indemnity Clause. Text | |
| Description [0..1] Text | Description. Text | |
| EPs Product_ Program. Details | Program. Details | |
| Meeting Time [0..1] Date Time | Meeting Time. Date Time | |
| Date Order [0..1] Numeric | Date Order. Numeric | |
| Activity/Event_ Category [0..1] Code | Category. Code | |
| Activity/Event_ Identification [0..1] Identifier | Identification. Identifier | |
| Activity/Event_ Place [0..1] Text | Place. Text | |
| Activity/Event_ Start [0..1] DateTime | Start. DateTime | |
| Activity/Event_ End [0..1] DateTime | End. DateTime | |
| Activity/Event_ Choice Allowed [0..1] Indicator | Choice Allowed. Indicator | |
| Guide_ Arrangement [0..1] Indicator | Arrangement. Indicator | |
| Coordinator_ Arrangement [0..1] Indicator | Arrangement. Indicator | |
| Description [0..1] Text | Description. Text | |
| Ending Place [0..1] Text | Ending Place. Text | |
| Ending Time [0..1] Date time | Ending Time. Date time | |
| EPs Product_ Activity/Event. Details | Activity/Event. Details | |
| Identification [0..1] Identifier | Identification. Identifier | |
| Choice Allowed [0..1] Indicator | Choice Allowed. Indicator | |
| Supplier [0..1] Identifier | Supplier. Identifier | |

| | | |
|--|-----------------------------|--|
| Start [0..1] Date Time | Start. Date Time | |
| Day of Week [0..1] Code | Day of Week. Code | |
| End [0..1] Date Time | End. Date Time | |
| Day of Week [0..1] Code | Day of Week. Code | |
| Duration [0..1] Text | Duration. Text | |
| Guide_ Arrangement [0..1] Indicator | Arrangement. Indicator | |
| Coordinator_ Arrangement [0..1] Indicator | Arrangement. Indicator | |
| Instructor_ Arrangement [0..1] Indicator | Arrangement. Indicator | |
| Instruction [0..*] Text | Instruction. Text | |
| Reservation Guarantee [0..1] Text | Reservation Guarantee. Text | |
| Indemnity Clause [0..1] Text | Indemnity Clause. Text | |
| Description [0..1] Text | Description. Text | |
| Optional_ EPs Product. Details | EPs Product. Details | |
| Category [0..1] Code | Category. Code | |
| Name [0..1] Text | Name. Text | |
| Identification [0..1] Identifier | Identification. Identifier | |
| Supplier_ Name [0..1] Text | Name. Text | |
| Supplier_ Identification [0..1] Identifier | Identification. Identifier | |
| Maximum_ Applicable Unit [0..1] Quantity | Applicable Unit. Quantity | |
| Minimum_ Applicable Unit [0..1] Quantity | Applicable Unit. Quantity | |
| Applicable Unit [0..1] Code | Applicable Unit. Code | |
| Start [0..1] Date Time | Start. Date Tim | |
| Day of Week [0..1] Code | Day of Week . Code | |

| | | |
|---|----------------------------|-----|
| End [0..1] Date Time | End. Date Time | |
| Day of Week [0..1] Code | End [0..1] Date Time | |
| Duration [0..1] Text | Duration. Text | |
| Response Time_ Duration [0..1] Text | Duration. Text | |
| Guide_ Arrangement [0..1] Indicator | Arrangement. Indicator | |
| Coordinator_ Arrangement [0..1] Indicator | Arrangement. Indicator | |
| Instructor_ Arrangement [0..1] Indicator | Arrangement. Indicator | |
| Instruction [0..*] Text | Instruction. Text | |
| Description [0..1] Text | Description. Text | |
| Indemnity Clause [0..1] Text | Indemnity Clause. Text | |
| Guide_ Licence. Details | Licence. Details | |
| Type [0..1] Code | Type. Code | |
| Category [0..1] Code | Category. Code | |
| Name [0..1] Text | Name. Text | |
| Class_ Name [0..1] Text | Name. Text | |
| Issuing Organization [0..1] Text | Issuing Organization. Text | |
| Issue [0..1] Date Time | Issue. Date Time | |
| Available Language [0..*] Text | Available Language. Text | |
| Valid Untill [0..1] Date Time | Valid Untill. Date Time | |
| Holder_ Name [0..*] Text | Name. Text | |
| Description [0..1] Text | Description. Text | |
| Purpose [0..1] Code | Purpose. Code | |
| Facility_ Location. Details | Location. Details | |
| Map_ URI [0..1] Identifier | URI. Identifier | Add |

| | | |
|---|--|--|
| Guest Health Condition. Details | Guest Health Condition. Details | |
| Response Requested [0..1] Indicator | Response Requested. Indicator | |
| Status [0..1]Text | Status. Text | |
| Type [0..1] Code | Type. Code | |
| Restriction [0..1] Text | Restriction. Text | |
| Description [0..1] Text | Description. Text | |
| Guest Carrying Device. Details | Guest Carrying Device. Details | |
| Response Requested [0..1] Indicator | Response Requested. Indicator | |
| Name [0..1] Text | Name. Text | |
| Type [0..1] Code | Type. Code | |
| Basic_ Specification [0..1] Text | Specification. Text | |
| Restriction [0..1] Text | Restriction. Text | |
| Description [0..1] Text | Description. Text | |
| Guest Certificate. Details | Guest Certificate. Details | |
| Response Requested [0..1] Indicator | | |
| Type [0..1] Code | | |
| Category {0..1} Code | | |
| Name [0..1] Text | | |
| Level [0..1] Text | | |
| Issuing Organization [0..1] Text | | |
| Issued [0..1] Date Time | | |
| Valid Untill [0..1] Date Time | | |
| Description [0..1] Text | | |
| | | |
| | | |

| | | |
|--|--|-----|
| Guest Accompanying Pet . Details | Guest Accompanying Pet. Details | |
| Supplier Allowed [0..1] Indicator | Supplier Allowed. Indicator | |
| Supplier Allowed_ Pet Category [0..1] Text | Pet Category. Text | |
| Supplier_ Restriction [0..1] Text | Restriction. Text | |
| Description [0..1] Text | Description. Text | |
| Guest Manner. Details | Guest Manner. Details | |
| Category [0..1] Code | Category. Code | |
| Item [0..1] Text | Item. Text | |
| Acceptance [0..1] Indicator | Acceptance. Indicator | |
| Description [0..1] Text | Description. Text | |
| Guest Disease Protection Means. Details | Guest Disease Protection Means. Details | |
| Category [0..1] Code | Category. Code | |
| Item [0..1] Text | Item. Text | |
| Restriction [0..1] Text | Restriction. Text | |
| Acceptance [0..1] Indicator | Acceptance. Indicator | |
| Description {0..1} Text | Description. Text | |
| EPs_ Dynamic_ Price. Details | Price. Details | |
| Valid Until [0..1] Date Time | Valid Until. Date Time | Add |
| Value [0..1] Amount | Value. Amount | Add |
| Applicable Guest_ Type [0..1] Code | Type. Code | Add |
| Refund_ Price. Details | Price. Details | |
| Condition [0..1] Text | Condition. Text | Add |
| Reason [0..1] Code | Reason. Code | Add |
| | | |

| EPs_Digital Payment Means. Details | Digital Payment Means. Details | |
|---|---------------------------------------|--|
| Applicable_Digital Payment [0..*] Identifier | Digital Payment. Identifier | |
| Type [0..1] Code | Type. Code | |
| Identification [0..1] Identifier | Identification. Identifier | |
| Cardholder_ Name [0..1] Text | Name. Text | |
| Expiry [0..1] Date | Expiry. Date | |
| Verification [0..1] Number | Verification. Number | |
| Valid From [0..1] Date Time | Valid From. Date Time | |
| Issuing Company_ Name [0..1] Text | Name. Text | |
| Description [0..1] Text | Description. Text | |
| | | |
| | | |
| | | |
| | | |
| | | |
| | | |
| | | |
| | | |
| | | |
| | | |
| | | |
| | | |
| | | |
| | | |
| | | |
| | | |

(The End)