

UNITED NATIONS
CENTRE FOR TRADE FACILITATION AND ELECTRONIC BUSINESS
(UN/CEFACT)

INTERNATIONAL SUPPLY CHAIN PROGRAMME DEVELOPMENT AREA
TRVAL AND TOURISM DOMAIN

BUSINESS REQUIREMENTS SPECIFICATION
(BRS)
EXPERIENCE PROGRAMS
INFORMATION EXCHANGE PROCESS

SOURCE: Project Team
ACTION: For public review

DATE: 31 January 2022
STATUS: Draft v1.0

Disclaimer (Updated UN/CEFACT Intellectual Property Rights Policy – ECE/TRADE/C/CEFACT/ 2010/20/Rev.2)

ECE draws attention to the possibility that the practice or implementation of its outputs (which include but are not limited to Recommendations, norms, standards, guidelines and technical specifications) may involve the use of a claimed intellectual property right.

Each output is based on the contributions of participants in the UN/CEFACT process, who have agreed to waive enforcement of their intellectual property rights pursuant to the UN/CEFACT IPR Policy (document ECE/TRADE/C/CEFACT/2010/20/Rev.2 available at http://www.unece.org/cefact/cf_docs.html or from the ECE secretariat). ECE takes no position concerning the evidence, validity or applicability of any claimed intellectual property right or any other right that might be claimed by any third parties related to the implementation of its outputs. ECE makes no representation that it has made any investigation or effort to evaluate any such rights.

Implementers of UN/CEFACT outputs are cautioned that any third-party intellectual property rights claims related to their use of a UN/CEFACT output will be their responsibility and are urged to ensure that their use of UN/CEFACT outputs does not infringe on an intellectual property right of a third party.

ECE does not accept any liability for any possible infringement of a claimed intellectual property right or any other right that might be claimed to relate to the implementation of any of its outputs.

13 **TABLE OF CONTENTS**14 **Content**

15	1 PREAMBLE	4
	1.1 AUDIENCE.....	4
	1.2 REFERENCE DOCUMENTS.....	4
	1.3 OBJECTIVE.....	5
	1.4 SCOPE.....	5
	1.5 CHANGE LOG.....	6
16	2 BUSINESS REQUIREMENTS	7
	2.1 BUSINESS REQUIREMENTS VIEWS.....	7
	2.2 BUSINESS PROCESS ELABORATION – USE CASE DIAGRAM.....	7
17	2.2.1 <i>Process Scope</i>	7
18	2.2.2 <i>Use case: EPs information exchange</i>	7
	2.3 INFORMATION FLOW DEFINITION – ACTIVITY DIAGRAM.....	8
19	2.3.1 <i>Action part canonical class diagram</i>	9
20	2.3.2 <i>Buyer part canonical class diagram</i>	10
21	2.3.3 <i>Seller part canonical class diagram</i>	11
22	2.3.4 <i>Price part canonical data model</i>	11
23	2.3.5 <i>Payment part canonical class diagram</i>	12
	2.4 BUSINESS RULES.....	12
	2.5 BUSINESS INFORMATION ENTITY CLASS DIAGRAMS.....	12
24	2.5.1 <i>Action part BIE class diagram</i>	12
25	2.5.2 <i>Buyer part BIE class diagram</i>	13
26	2.5.3 <i>Seller part BIE class diagram</i>	14
27	2.5.4 <i>Price part BIE class diagram</i>	15
28	2.5.5 <i>Payment part BIE class diagram</i>	16
	2.6 CORE COMPONENT BUSINESS DOCUMENT ASSEMBLY.....	16
29	2.6.1 <i>Business Document Components</i>	18
	2.7 CODE LISTS DEVELOPED.....	37

30

31 **TABLE OF FIGURES and TABLES**

32	Table 2-1 Use case description EP Information Exchange	8
33	Table 2-2 Activity diagram description between trading partners	9
34	Table 2-3 Message assembly	16
35	Table 2-4 BIEs of message components	17
36	Table 2-5 Business Document Components	18
37	Table 2-6 Code lists and values	37
38		
39	Figure 1-1 EP comparison of conventional tours and new trends in tourism	4

40 **Figure 2-1 Use case diagram - EP Information Exchange** 7
41 **Figure 2-2 Activity diagram (EPs information requested and responded)**..... 8
42 **Figure 2-3 Action part canonical class diagram**..... 9
43 **Figure 2-4 Buyer part canonical class diagram** 10
44 **Figure 2-5 Seller part canonical class diagram** 11
45 **Figure 2-6 Price part canonical class diagram** 11
46 **Figure 2-7 Payment part canonical class diagram**..... 12
47 **Figure 2-8 Action part class diagram**..... 13
48 **Figure 2-9 Buyer part class diagram**..... 14
49 **Figure 2-10 Seller part class diagram** 15
50 **Figure 2-11 Price part class diagram** 15
51 **Figure 2-12 Payment part class diagram** 16

52
53
54
55
56
57
58
59
60
61
62
63
64
65
66
67
68
69
70
71
72
73
74
75
76
77
78
79



80 1 Preamble

81 After the Green Paper on Sustainable Tourism -Experience Programs was published by
82 UN/CEFACT in April, 2019, the working experts of Travel/ Tourism Domain found it
83 necessary to develop the technical artefacts on experience programs to make their actual trade
84 available globally through their standardization activities. The project named as Experience
85 Programs Technical Artefacts was approved by the Bureau in September, 2019

86 Much discussion had been made before the Green Paper was created, especially, on
87 experience programs (EP's) or what they are and should be. They could be regarded as newly
88 emerging travel related products in one aspect, and in the other, they could be service products
89 developed even by non-travel related persons or corporations. In either case they are or will
90 be created in local regions to vitalize their regional economy. And at the same time, it is
91 expected that they could improve the QoL (Quality of Life) of people living in local areas or
92 visitors coming there. Local people are and might be keen enough to sustain their
93 environments by themselves.

94 It was also understood that any of the conventional tours, such as sightseeing tours in urban
95 or rural areas, optional tours, etc. could not exist unless they should be developed in the same
96 concept as EPs. Therefore, this project makes no difference among them whether they are
97 EPs or conventional tours, etc., which means conventional tours are a part of EPs. This is
98 shown in Figure 1-1.

99

EPs	Past	Present	New perspectives
Conventional tours	Sightseeing tours Optional tours (Optional add-ons to basic tour packages) Tours based on eco or green tourism		To vitalize regions To sustain environments
New trends in tourism		Agriculture tours Industry tours Health-related tours Sports tours Social tours Any kind of activity tours	To improve Quality of Life (QOL)

100 **Figure 1-1 EP comparison of conventional tours and new trends in tourism**

101 1.1 Audience

102 The audience of this document is all users who are interested in the Experience Programs
103 Information Exchange process and information data.

104 1.2 Reference Documents

105 Knowledge and application of the following standards is crucial to the development of
106 quality business requirements specifications. Other key references are shown in the
107 appropriate part of the document.

108

- 109 • UMM Meta Model Core Module (Candidate for 2.0) 2009-01-30
- 110 • UMM Meta Model Foundation Module (Candidate for 2.0) 2009-01-30
- 111 • Core Components Technical Specification-Part 8 of the ebXML Framework
112 V2.01(15 Nov. 2003)
- 113 • Core Components Technical Specification Technical Corrigendum V2.01, 12 Feb.
114 2007

- 115 • Core Components Data Type Catalogue V2.1 2008-04-08
- 116 • XML Naming and Design Rules 2.0 17 Feb., 2006
- 117 • UML Profile for Core Components, V1.0, Final Specification, 2008-01-16
- 118 • UN/CEFACT CC Library Version 2012 A
- 119 • UN/CEFACT Business Requirements Specification Version 1.5
- 120 (CEFACT/ICG/005)
- 121 • Reference Data Model (RDM) Guideline, Draft v1.0.0.2. 2016-12-15 Code
- 122 Management User Guide, 2018-3-05

123 **1.3 Objective**

124 The objective of this document is to make EPs available and traded not only locally, but also
125 globally. To standardize the exchanged data applied to trade EPs between trading parties is
126 primarily dealt with. And data exchanged are described in this document and their
127 standardization process will be defined in here. The trading parties could be defined as a
128 buying party of EPs, such as a consumer, a corporate person, an intermediary or a travel agent
129 (hereinafter a buyer) and a supplying party of EPs, such as an EPs supplier, an information
130 supplier, or an intermediary, etc. (hereinafter a seller).

131 As EPs have been and will be usually created, and traded locally in a small scale, EPs
132 suppliers desire to have any good means to trade them globally and to welcome global visitors
133 to their regions. They have a confidence that their products will surely meet the needs of the
134 visitors whether they are local or global. Yet at the same time they want to keep their own
135 environments sustainable as best as possible. Therefore, they need to exchange information
136 for this purpose between them and buying parties.

137 It is understood by the experts when to develop EPs technical artefacts, the working results
138 of SLH (Small scaled Lodging House) related projects will be reutilized as best as possible,
139 because they are those developed by Travel/Tourism Domain for the trade of small scaled
140 lodging house products based on the ebXML specifications,

141 the major difference of which is the kind of traded product. But at the same time, it is well
142 understood that EPs needs a lot of new data entities communicated between new trading
143 parties.

144 And the concept of UN/SDGs (Sustainable Development Goals) will be and should be well
145 considered when to create EPs. Necessary data on sustainability information will surely be
146 communicated between trading parties, which necessitates new business data.

147 **1.4 Scope**

148 In this document what EPs are and how the business is performed by using what data are
149 described. And then to facilitate EPs trade electronically between trading parties, basic
150 diagrams and required business data are shown, which will then be detailed in this document
151 for the use of electronic handling.

152 The basic frame of the document comes from the outputs of SLH (Small scaled Lodging
153 House) related projects, which would be amended to meet the needs when they may not
154 appropriate.

155 For EPs trade between business parties, such functions as searching, reserving, cancelling,
156 changing, paying, etc. processes might be needed. These ones are the same as the ones of
157 SLH related processes. But EPs suppliers offer their customers quite diversified products,
158 which may need more new data to take care of in this document than those of SLH related
159 processes.

160 Relevant codes necessary for the use of EPs data in processes will be provided in the specified
161 code list. And Technical Implementation Guide in order to describe how the data are
162 composed and used by system developers will also be provided in a separate document.

163 The use of these documents and relevant list developed in the project will surely be provided
164 any system developers to trade EPs.

165 **1.5 Change log**

166

Date of Change	Version	Changed	Summary of Changes
April 27, 2021	D. 08		Initial draft
June 15, 2021	D.085		Team input processed
Oct. 12, 2021	D. 0.9		Team input processed
Dec.17, 2021	D. 0.95		Team input processed
Jan. 31, 2022	1.0		Public Review version

167

168

169

170

171

172

173

174

175

176

177

178

179

180

181

182

183

184

185

186

187

188

189

190

191

192

193

194 2 Business Requirements

195 2.1 Business requirements views

196 EPs process and relevant data are described in this document to trade EPs between business
197 parties.

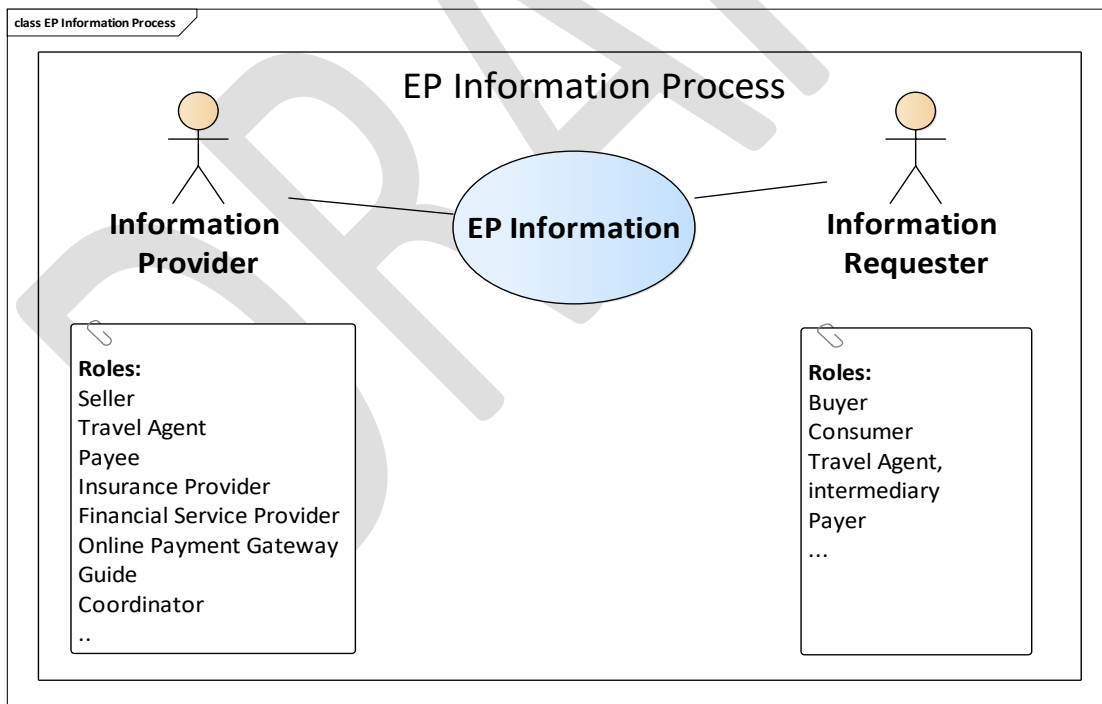
198 2.2 Business process elaboration – Use case diagram

199 2.2.1 Process Scope

200 This process details the request and response of information used for EPs trade between a
201 seller and a buyer. Any buyer can send the data to a seller for this purpose, and receive a
202 response from the seller, if the requesting data are valid.

203 2.2.2 Use case: EPs information exchange

204 The use case diagram in a wider sense of EPs trade is shown in Figure 2-1. Each party of a
205 seller or a buyer could either be an individual or a corporate person, who could play multiple
206 roles. For example, a buyer could be a customer, a consumer, a travel agent, an intermediary,
207 a payer, etc. and a seller could be an owner, a provider, an operator, a coordinator, a guide, a
208 travel agent, an intermediary or sales company, a payee, a financial service provider, an
209 insurance service provider, an online payment gateway, etc. It is noted that any person or
210 corporate of any business area, who wants to serve consumers could create EPs related
211 products or even a single one and be a seller of that or those. This is not limited within
212 conventional travel related business area.



213
214 **Figure 2-1 Use case diagram - EP Information Exchange**

215 In order to trade EPs, a variety of EPs related information could be exchanged between a
216 buyer and a seller. It could be a request or a response of information, such as of EPs product
217 booking, its related price and payment, an itinerary or an insurance document, a guide, and a
218 lot other information. The Table 2-1 Use case description EP Information Exchange shows
219 the use case description.

220
221

Use case description	
Business process name	EPs Information Request and Response Message
Identifier	EPs Info REQ & RSP MSG
Actors	Buyer and Seller
Description	A buyer requests information from a seller.
Pre-condition	A buyer knows to which seller the buyer could request his/her information needed.
Post-conditions	A buyer could confirm his information requested.
Scenario	EPs Information Request and Response
Remarks	A buyer or seller can either be a corporate or private person.

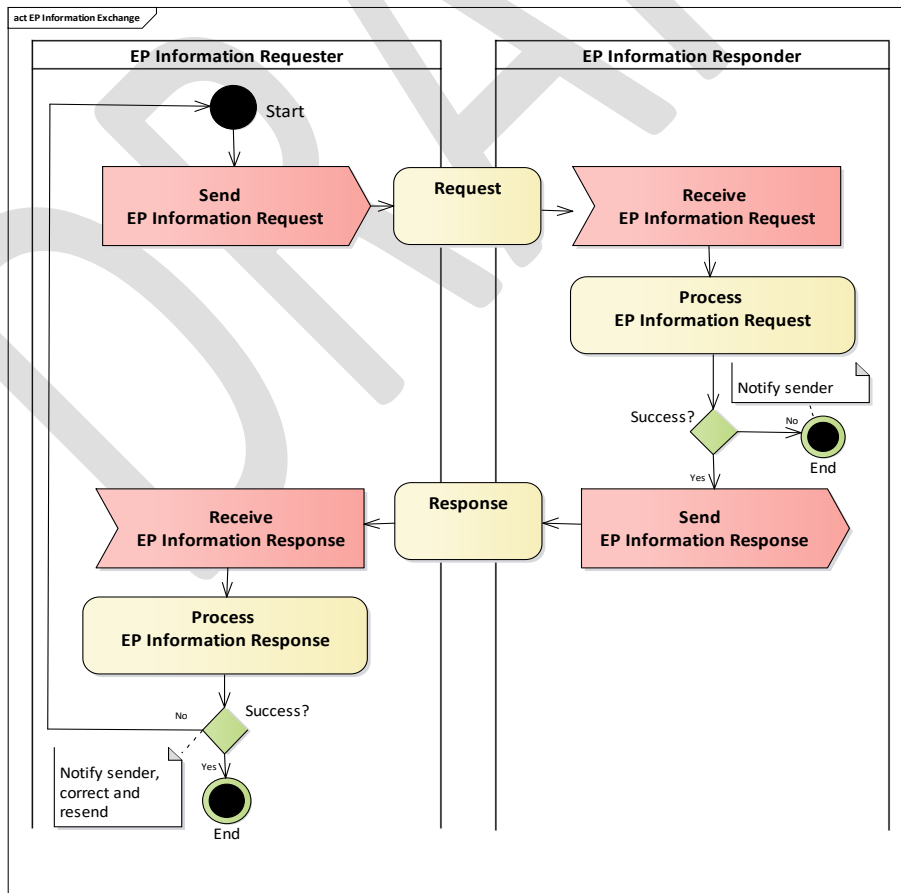
222 Table 2-1 Use case description EP Information Exchange

223 **2.3 Information flow definition – Activity diagram**

224 The corresponding activity diagram of the use case in chapter 2.2.2, is presented in Figure
225 2-2.

226 This diagram is between trading parties, or a buyer and a seller. Any buyer can send his
227 request information to a seller as his request and receive the response information from the
228 seller as the response. This process is in line with common practice used between trading
229 parties, or a buyer and a seller, which is shown below.

- 230
231 Scenarios used here are depicted as in the following.
232 - EPs information requested by a buyer to a seller
233 - EPs information responded from the seller to the buyer



234
235 **Figure 2-2 Activity diagram (EPs information requested and responded)**

236 The activity diagram of EPs is described as in Figure 2-2.

Activity description	
Categories	Description and Values
Business process	EPs information requested and responded between trading parties
Product Classification	EPs product or related information
Industry Classification	Not only travel/tourism industry but also any kind of industry, in which EPs could be developed and operated.
Geopolitical	Global
Official Constraint	None
Business Process Role	Roles of an EPs seller or a buyer
Supporting Role	There might be settlement function when to settle payment between business parties
System Capabilities	No limitations

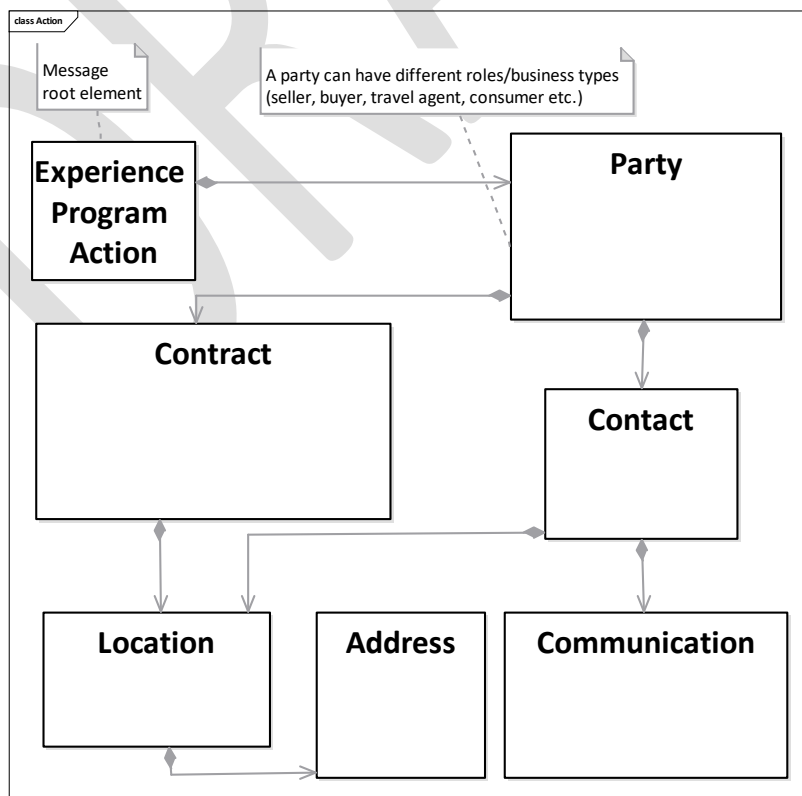
237 **Table 2-2 Activity diagram description between trading partners**

238 The class diagrams for EPs information are developed in a manner that specify the cross
 239 industry reusable business information entities and the travel/ tourism reusable business
 240 information entities.

241 The technical artefacts developed by SLH related projects could be reused as best as possible
 242 in EPs Information exchange. There are some new classes created for the use of EPs
 243 information exchange.

244 The class diagrams for EPs Information Process are shown below in Figure 2-3 up to Figure
 245 2-7. The first of the diagram is Action part, Experience Program Action of which is the main
 246 class.

247 **2.3.1 Action part canonical class diagram**

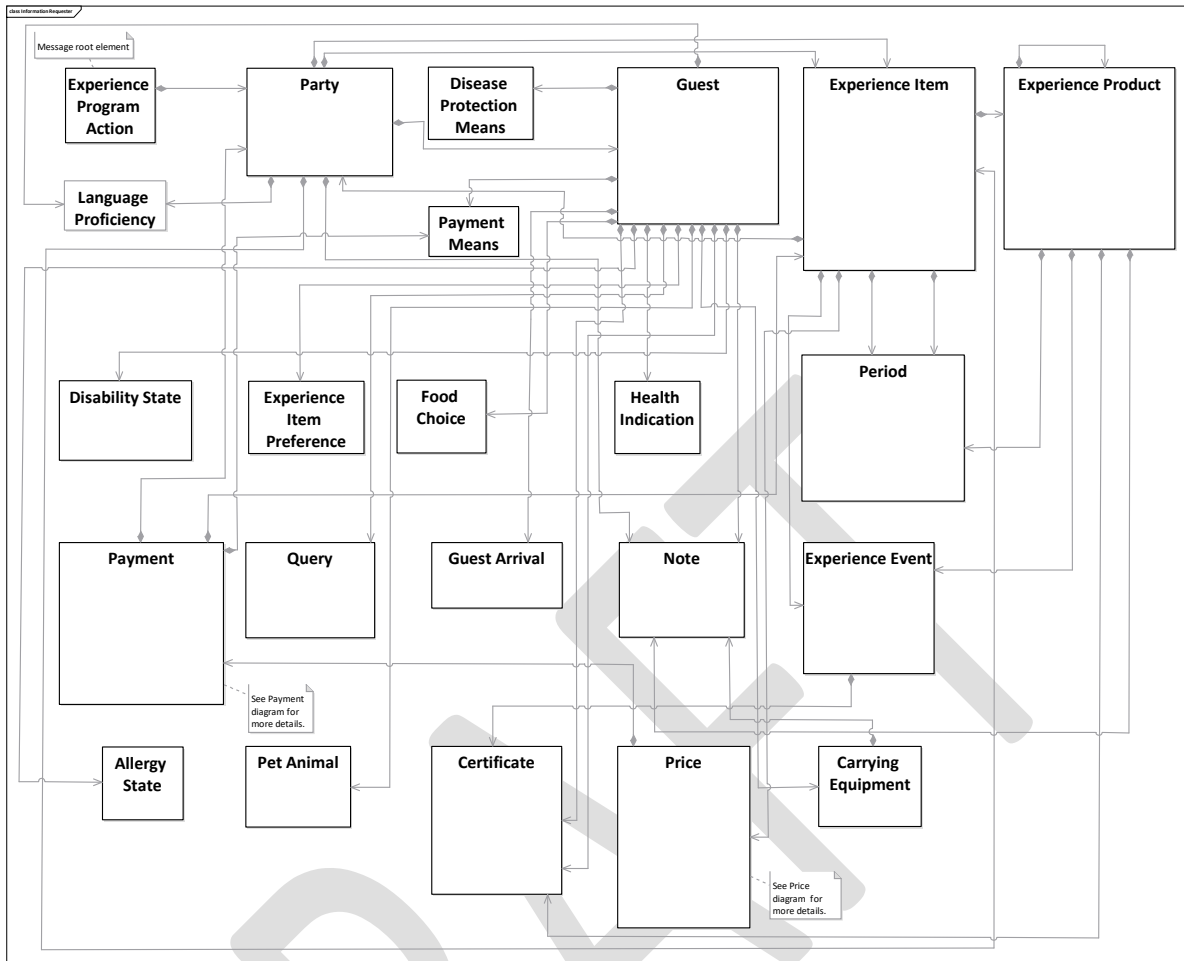


249 **Figure 2-3 Action part canonical class diagram**

250
 251 Among the diagrams the following parts of class diagrams are depicted to show their parts.

252 **2.3.2 Buyer part canonical class diagram**

253 Figure 2-4 below is Buyer part class diagram, Party of which is shown as the main class.

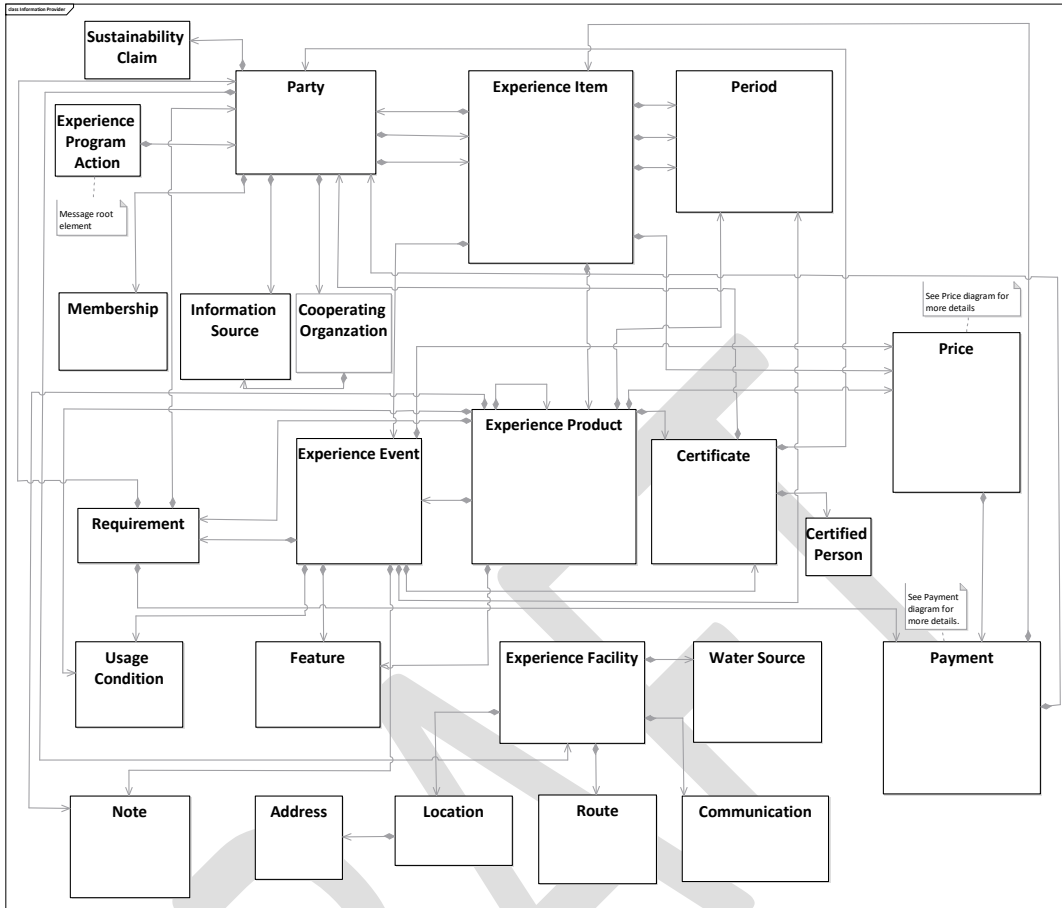


254 **Figure 2-4 Buyer part canonical class diagram**

255
256
257
258
259
260
261
262
263
264
265
266
267
268
269
270

271 **2.3.3 Seller part canonical class diagram**

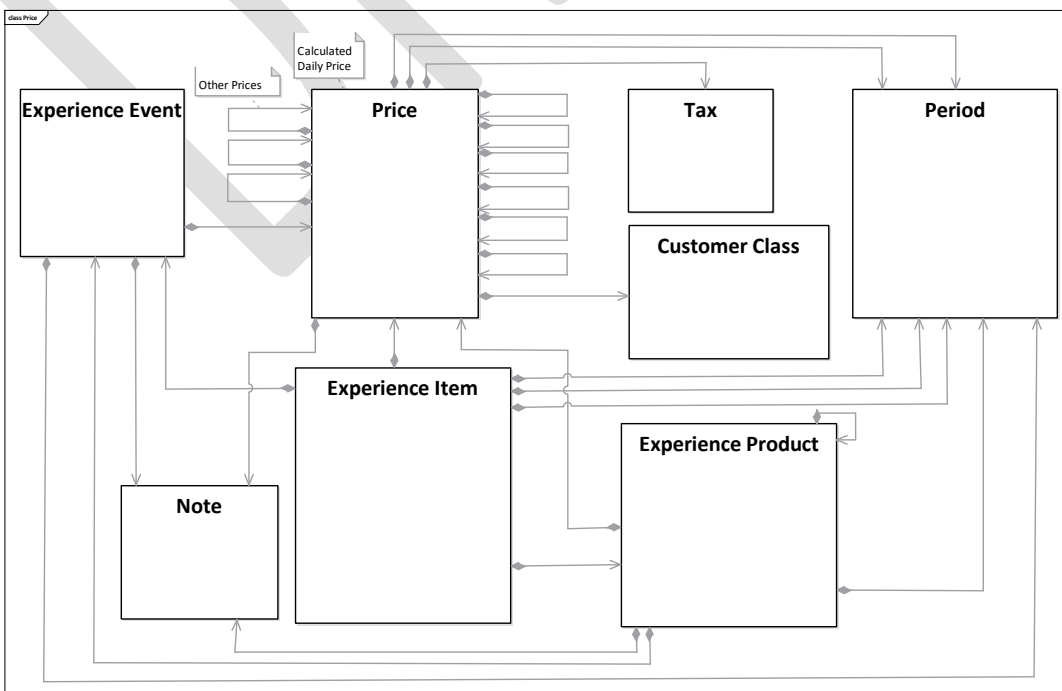
272 And then Figure 2-5 below is Seller part class diagram, Party of which is shown as the main
 273 class.



274
 275 **Figure 2-5 Seller part canonical class diagram**

276 **2.3.4 Price part canonical data model**

277 And Figure 2-6 below is Price part class diagram, Daily Price of which is the main class.



278
 279 **Figure 2-6 Price part canonical class diagram**

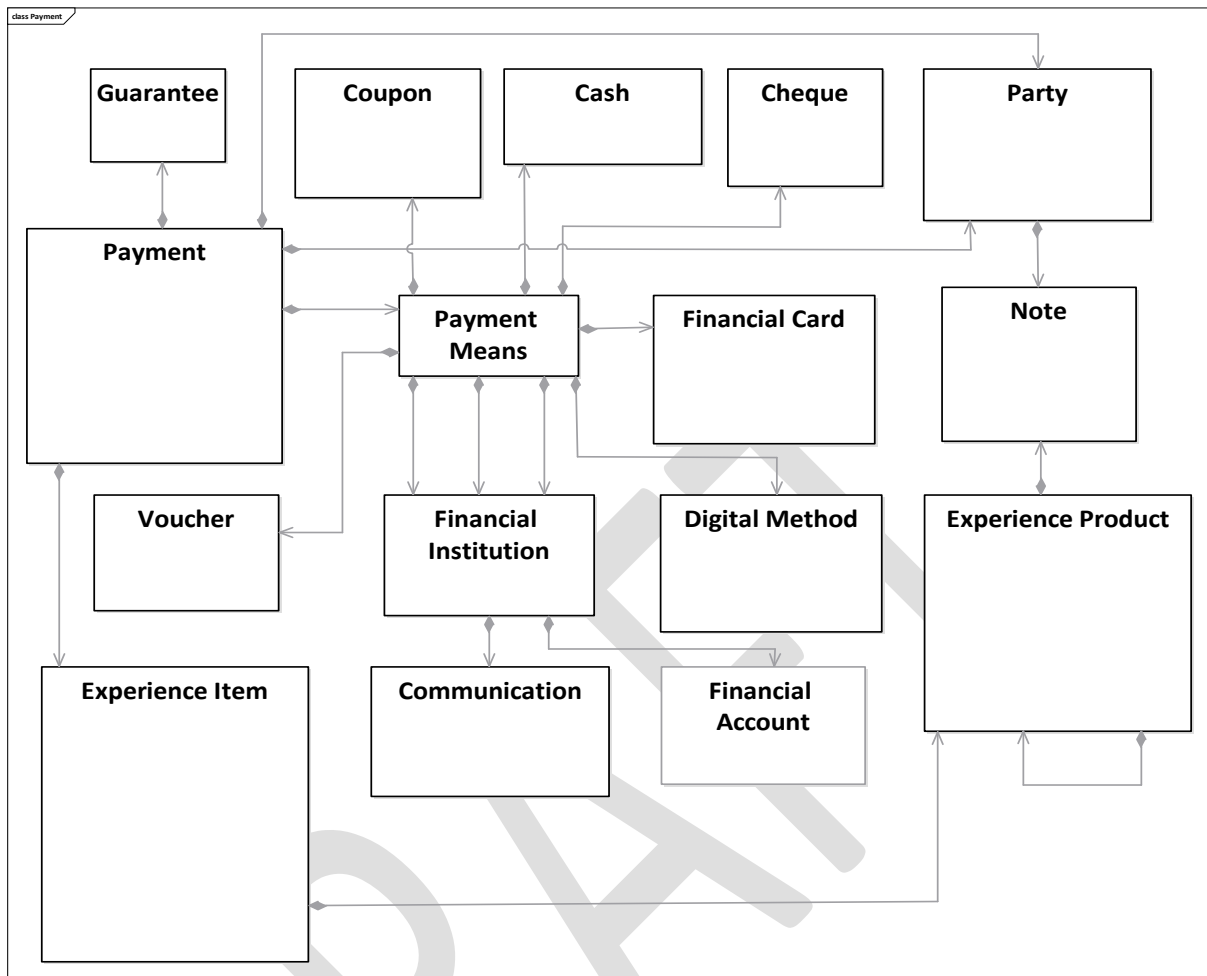
280

2.3.5 Payment part canonical class diagram

281

The last class diagram is Payment part class diagram, Payment Settlement of which is the main class.

282



283

284

Figure 2-7 Payment part canonical class diagram

285

2.4 Business Rules

286

In the activity diagram in Figure 2-2, a buyer may send request information as a request to a supplier to search, reserve, cancel, amend or pay and the supplier may send back the response information as the reply to the buyer. This transaction may sometimes require a prior contract between the trading parties.

287

288

289

290

2.5 Business Information Entity class diagrams

291

2.5.1 Action part BIE class diagram

292

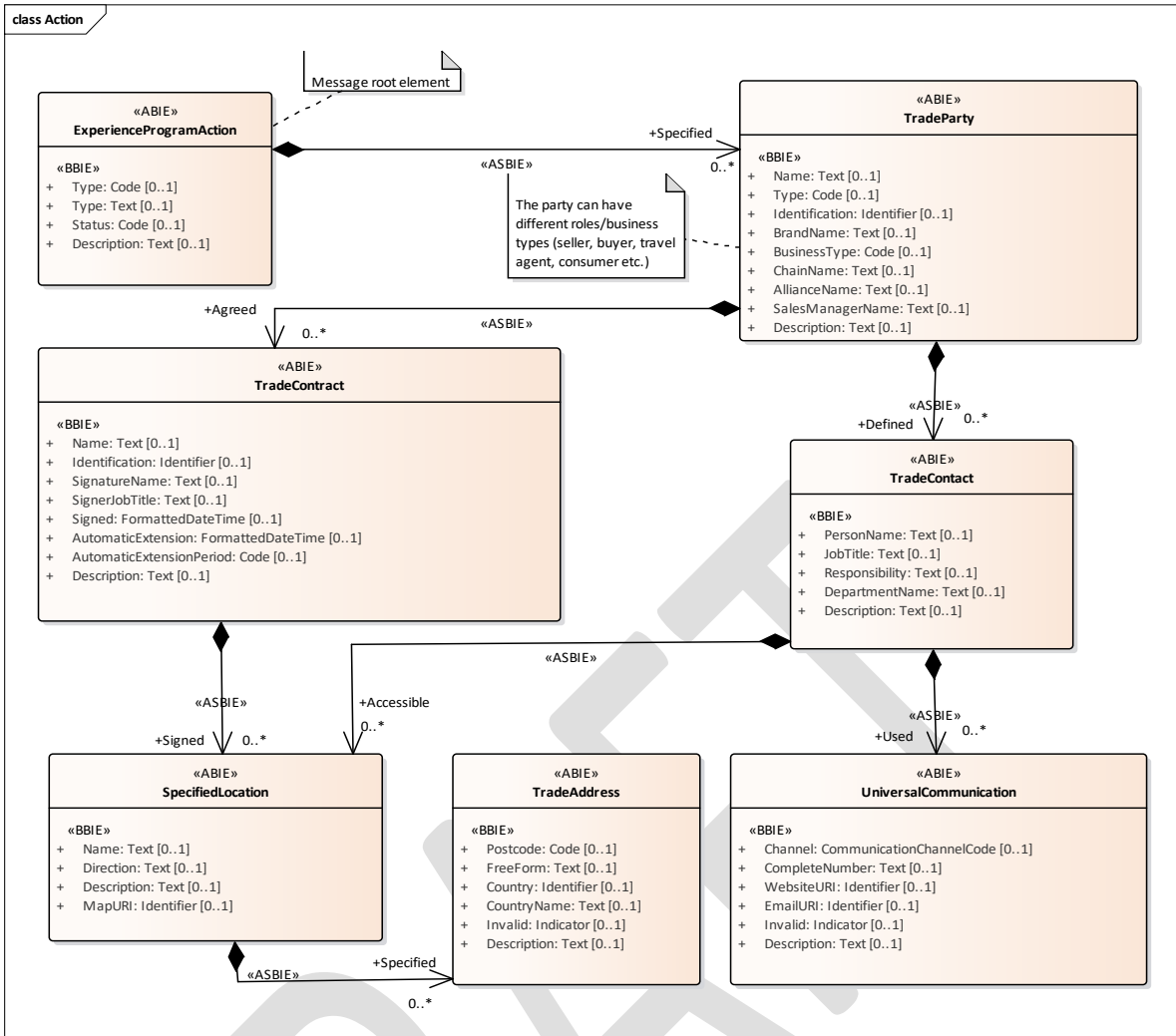


Figure 2-8 Action part class diagram

2.5.2 Buyer part BIE class diagram

Then Buyer part BIEs class diagram is shown below.

293
294
295
296
297
298
299
300
301
302
303
304
305
306
307
308
309
310

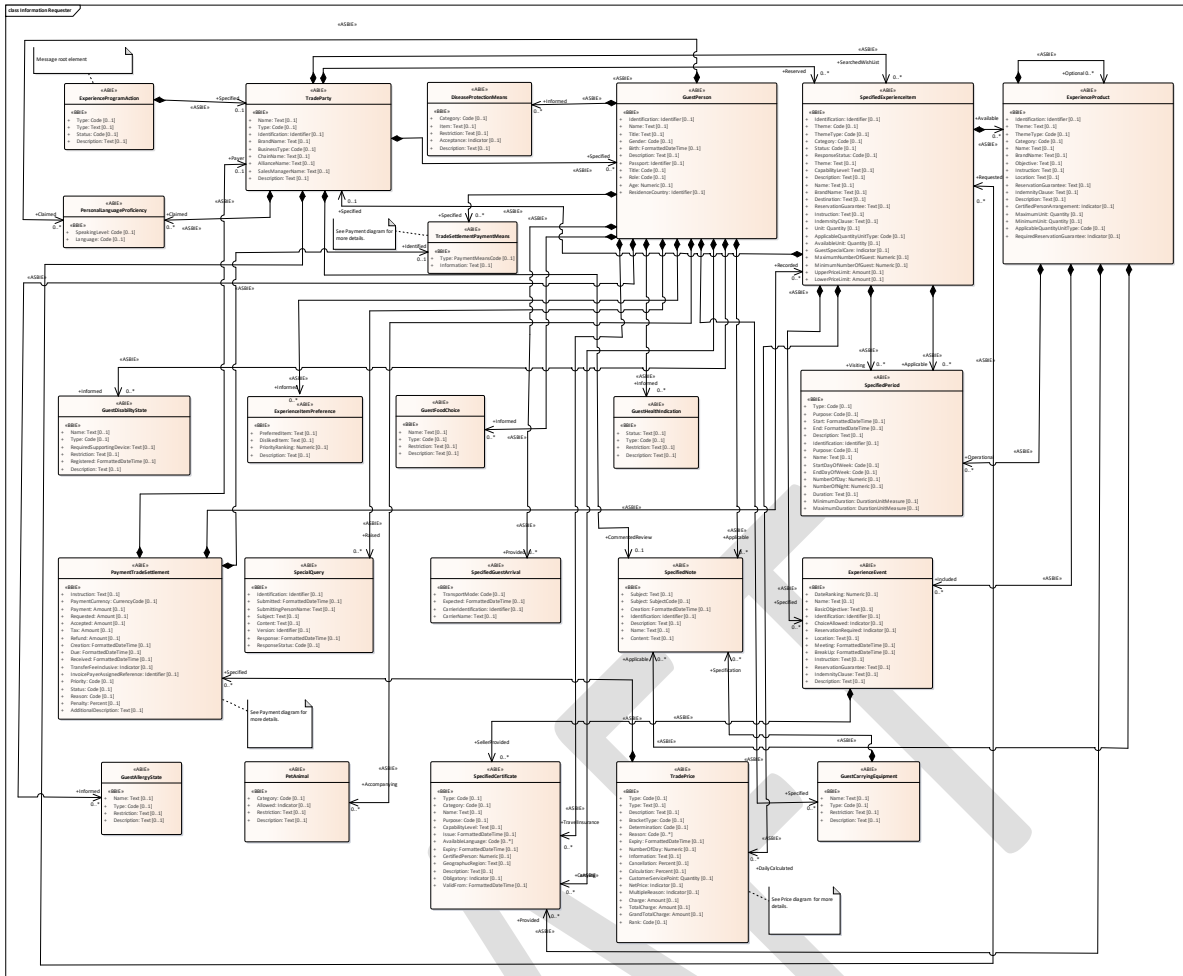


Figure 2-9 Buyer part class diagram

2.5.3 Seller part BIE class diagram

Seller part BIEs class diagram is shown below.

311
312
313
314

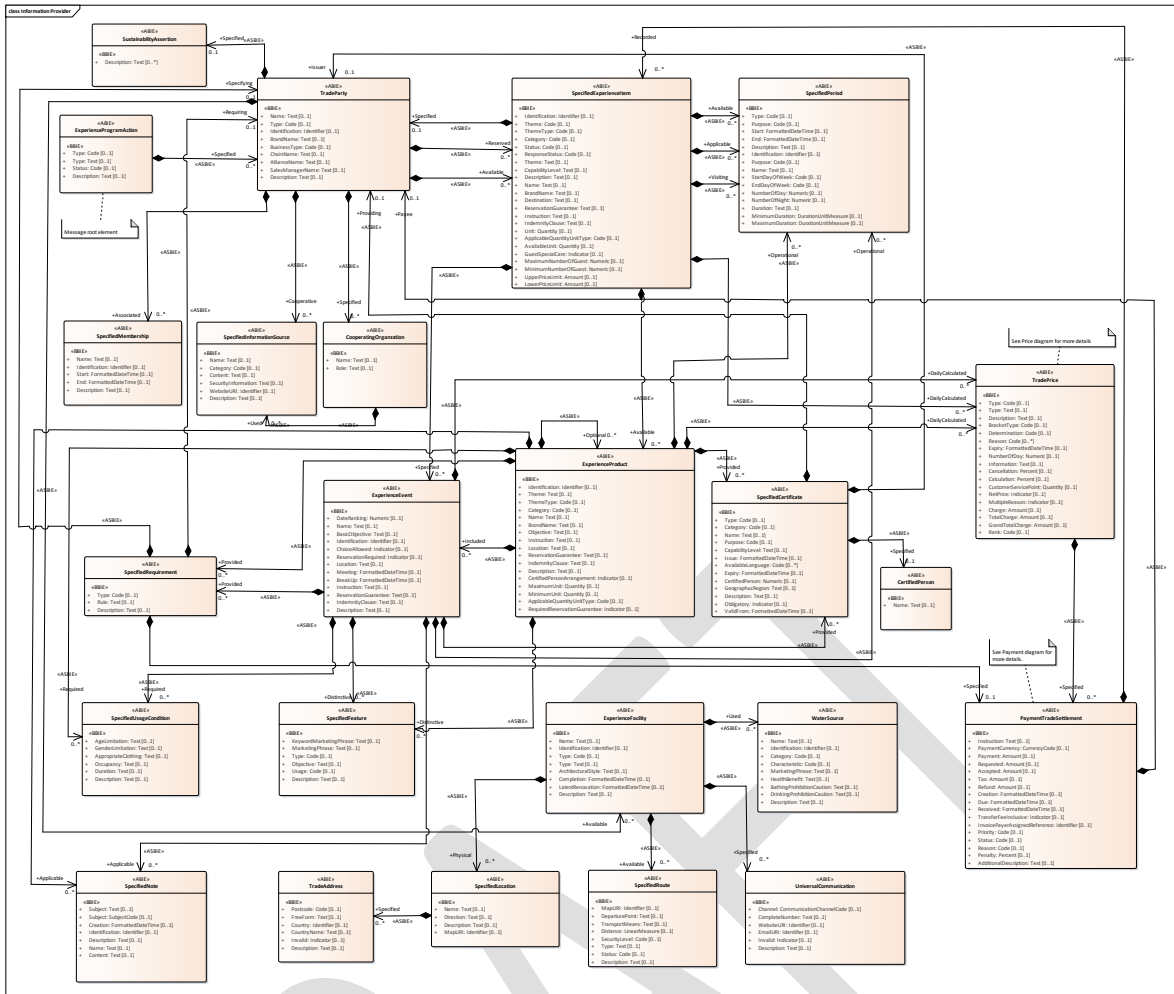


Figure 2-10 Seller part class diagram

2.5.4 Price part BIE class diagram

Below is the Price part BIEs class diagram.

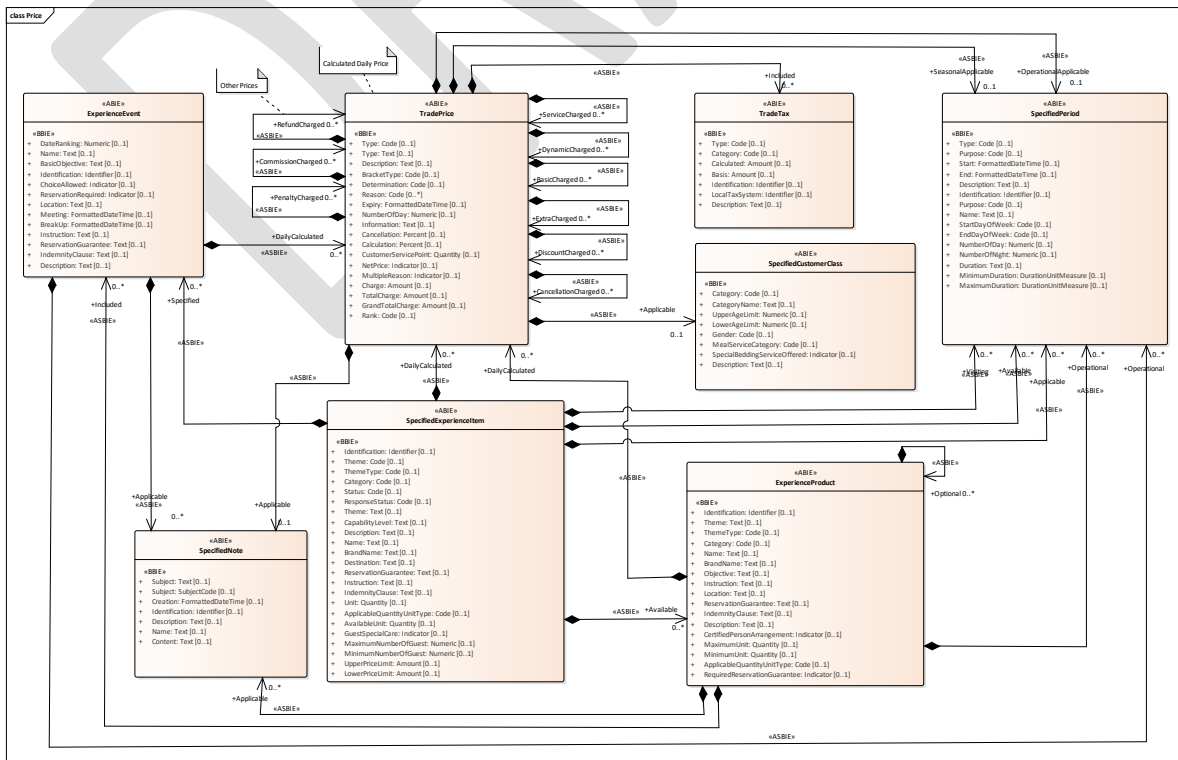


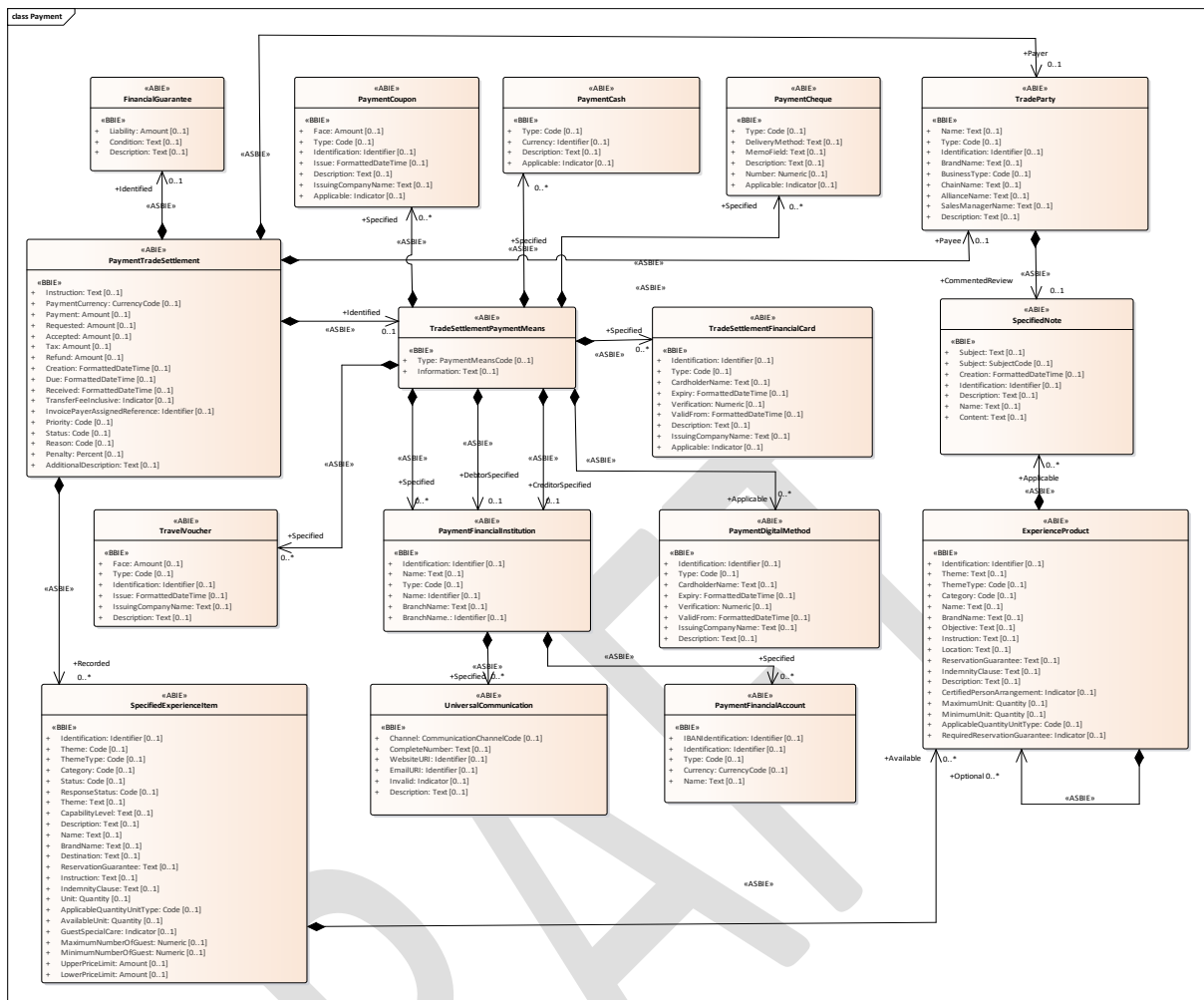
Figure 2-11 Price part class diagram

315
316
317
318

319
320

321 **2.5.5 Payment part BIE class diagram**

322 Below is Payment part BIEs class diagram.



323
324 **Figure 2-12 Payment part class diagram**

325 **2.6 Core Component Business Document Assembly**

326 Two messages have been developed for the Experience Program Information Exchange
327 Process:

- 328 • EP Information Request
- 329 • EP Information Response

330 **Table 2-3 Message assembly**

Entity	Name	Definition	Min	Max
Entity	EP Information Request	A buyer or intermediary (agent) request for information such as an experience item/product booking, its related price and payment, an itinerary or an insurance document, a guide, and a lot other information from a seller.		
Assoc	Exchanged Document Context	The scenario or setting of an exchanged document, such as its business process application context.	0	1
Assoc	Exchanged Document	A collection of data for a piece of written, printed or electronic matter that is exchanged between two or more parties.	1	1

Entity	Name	Definition	Min	Max
Assoc	Experience Program Action	Any type of action such as to search, reserve, pay, necessary to trade an organized program in which participants are involved in one or more types of happenings, such as adventure experience, business experience, wellness experience, etc.	1	1

Entity	Name	Definition	Min	Max
Entity	EP Information Response	A seller response on the EP information request received from the buyer or intermediary (agent).		
Assoc	Exchanged Document Context	The scenario or setting of an exchanged document, such as its business process application context.	0	1
Assoc	Exchanged Document	A collection of data for a piece of written, printed or electronic matter that is exchanged between two or more parties.	1	1
Assoc	Experience Program Action	Any type of action such as to search, reserve, pay, necessary to trade an organized program in which participants are involved in one or more types of happenings, such as adventure experience, business experience, wellness experience, etc.	1	1

331

332

Table 2-4 BIEs of message components

Type	Short Name	Definition	Data type	Min Occur.	Max Occur.
Entity	Exchanged Document Context	The scenario or setting of an exchanged document, such as its business process application context.			
Attr.	Test Indicator	The indication of whether or not this exchanged document context is a test.	Indicator	0	1
Assoc.	Business Process Parameter	A business process context parameter specified for this exchanged document context.		0	1
Assoc.	Scenario Parameter	A scenario context parameter specified for this exchanged document context.		0	1
Assoc.	Application Parameter	An application context parameter specified for this exchanged document context.		0	1
Assoc.	Guideline Parameter	A guideline context parameter specified for this exchanged document context.		0	1
Assoc.	Message Standard Parameter	The message standard document context parameter specified for this exchanged document context.		0	1
Assoc.	User Specified Parameter	A user specified document context parameter specified for this exchanged document context.		0	1
Entity	Document Context Parameter	A feature that is fixed for a particular document context.			
Attr.	ID	The ID of this document context parameter.	Identifier	0	1
Attr.	Value Text	The value of this document context parameter.	Text	0	1
Entity	Exchanged Document	A collection of data for a piece of written, printed or electronic matter that is exchanged between two or more parties.			
Attr.	ID	The ID of this exchanged document.	Identifier	1	1
Attr.	Type Code	The code specifying the type of exchanged document.	Code	0	1
Attr.	Status Code	The code specifying the status of this exchanged document.	Code	0	1

Type	Short Name	Definition	Data type	Min Occur.	Max Occur.
Attr.	Issue Date Time	The date, time, date time or other date time value for the issuance of this exchanged document.	Date Time	1	1
Attr.	Copy Indicator	The indication of whether or not this exchanged document is a copy.	Indicator	0	1
Attr.	Remark	A remark regarding this exchanged document.	Text	0	1
Attr.	Revision Date Time	The date, time, date time or other date time value for the revision of this exchanged document.	Date Time	0	1
Assoc.	Sender	The party that sends this exchanged document.		0	1
Assoc.	Recipient	A trade party that receives this exchanged document.		0	*

333 See for components of Experience Program Action (root element) in the next paragraph.

334 2.6.1 Business Document Components

335 The Experience Program Action component is part of the message. All the components
336 associated directly or indirectly are listed below.

337 **Table 2-5 Business Document Components**

Type	Short Name	Definition	Min Occur.	Max Occur.	Data type
ABIE	Certified Person	A person holding a valid certificate authorized to perform the task to which he is assigned.			
BBIE	Name	The name, expressed as text, for this certified person.	0	1	Text
ABIE	Cooperating Organization	An organized structure set up for a particular purpose, such as a business, government body, department, charity, or financial institution working together with another organization, business, or person.			
BBIE	Name	The name, expressed as text, for this cooperating organization.	0	1	Text
BBIE	Role Code	The code specifying the role for this cooperating organization.	0	1	Code
ASBIE	Used Information Source	A cooperative information source used for this cooperating organization.	0	*	
ABIE	Desease Protection Means	A measure to protect human beings or animals from getting an illness.			
BBIE	Category Code	The code specifying the category of this disease protection means.	0	1	Code
BBIE	Item Text	The item, expressed as text, for this disease protection means.	0	1	Text
BBIE	Restriction Text	The restriction, expressed as text, for this disease protection means.	0	1	Text
BBIE	Acceptance Indicator	The indication whether or not this disease protection means is accepted.	0	1	Indicator
BBIE	Description	The textual description of this disease protection means.	0	1	Text
ABIE	Experience Event	An involvement of a person in an experience program in which some happening, such as a nature watching, woodware manufacturing, meditation, holiday trip, dinner, theme park visit, could be experienced.			

Type	Short Name	Definition	Min Occur.	Max Occur.	Data type
BBIE	Date Order Number	The value, expressed as a date order number, of this experience event.	0	1	Numeric
BBIE	Name	The name, expressed as text, for this experience event.	0	1	Text
BBIE	Basic Objective Text	The basic objective, expressed as text, for this experience event.	0	1	Text
BBIE	ID	The identifier of this experience event.	0	1	Identifier
BBIE	Choice Allowed Indicator	The indication whether or not a choice is allowed for this experience event.	0	1	Indicator
BBIE	Reservation Required Indicator	The indication whether or not a reservation is required for this experience event.	0	1	Indicator
BBIE	Location Text	The location, expressed as text, for this experience event.	0	1	Text
BBIE	Meeting Date Time	The meeting date, time, date time, or other date time value for this experience event.	0	1	Formatted Date Time
BBIE	Break Up Date Time	The break up date, time, date time, or other date time value for this experience event.	0	1	Formatted Date Time
BBIE	Instruction Text	The instruction, expressed as text, for this experience event.	0	1	Text
BBIE	Reservation Guarantee Text	The reservation guarantee, expressed as text, for this experience event.	0	1	Text
BBIE	Indemnity Clause Text	The indemnity clause, expressed as text, for this experience event.	0	1	Text
BBIE	Description	The textual description of this experience event.	0	1	Text
ASBIE	Provided Requirement	A specified requirement provided for this experience event.	0	*	
ASBIE	Required Usage Condition	The specified usage condition required for this experience event.	0	1	
ASBIE	Specified Party	A trade party specified for this experience event.	0	*	
ASBIE	Distinctive Feature	A distinctive feature specified for this experience event.	0	*	
ASBIE	Provided Certificate	A certificate provided for this experience event.	0	*	
ASBIE	Daily Calculated Price	A daily calculated price for this experience event.	0	*	
ASBIE	Operational Period	An operational period specified for this experience event.	0	*	
ASBIE	Applicable Note	A specified note applicable to this experience event.	0	*	
ABIE	Experience Facility	A structure or place that provides a particular involvement to a person, such as a restaurant, hotel, theme park, hot spring bathing pool, parking lot, meeting room.			
BBIE	Name	The name, expressed as text, for this experience facility.	0	1	Text
BBIE	ID	The identifier of this experience facility.	0	1	Identifier
BBIE	Type Code	The code specifying the type of experience facility.	0	1	Code
BBIE	Type Text	The type, expressed as text, of this experience facility.	0	1	Text
BBIE	Architectural Style Text	The architectural style, expressed as text, for this experience facility.	0	1	Text
BBIE	Completion Date	The date of the completion of this experience facility.	0	1	Formatted Date Time

Type	Short Name	Definition	Min Occur.	Max Occur.	Data type
BBIE	Latest Renovation Date	The date of the renovation of this experience facility.	0	1	Formatted Date Time
BBIE	Description	The textual description of this experience facility.	0	1	Text
ASBIE	Used Water Source	A water source used by this experience facility.	0	*	
ASBIE	Available Route	An available route specified for this experience facility.	0	*	
ASBIE	Physical Location	A physical location specified for this experience facility.	0	*	
ASBIE	Specified Communication	A specified universal communication for this experience facility.	0	*	
ABIE	Experience Item Preference	An involvement of a person in a happening, such as a theme park, a guided tour that is liked or wanted more than another item.			
BBIE	Preferred Item Text	The preferred item, expressed as text, for this experience item preference.	0	1	Text
BBIE	Disliked Item Text	The disliked item, expressed as text, for this experience item preference.	0	1	Text
BBIE	Priority Ranking Number	The value, expressed as a priority ranking number, for this experience item preference.	0	1	Numeric
BBIE	Description	The textual description of this experience item preference.	0	1	Text
ABIE	Experience Product	Any service that provides an involvement of a person, such as an adventure experience, wellness experience, social or business activity experience.			
BBIE	ID	The identifier of this experience product.	0	1	Identifier
BBIE	Theme Text	The theme, expressed as text, for this experience product.	0	1	Text
BBIE	Theme Type Code	The code specifying the type of theme for this experience product.	0	1	Code
BBIE	Category Code	The code specifying the category of this experience product.	0	1	Code
BBIE	Name	The name, expressed as text, for this experience product.	0	1	Text
BBIE	Brand Name	The brand name, expressed as text, for this experience product.	0	1	Text
BBIE	Objective Text	The objective, expressed as text, for this experience product.	0	1	Text
BBIE	Instruction Text	The instruction, expressed as text, for this experience product.	0	1	Text
BBIE	Location Text	The location, expressed as text, for this experience product.	0	1	Text
BBIE	Reservation Guarantee Text	The reservation guarantee, expressed as text, for this experience product.	0	1	Text
BBIE	Indemnity Clause Text	The indemnity clause, expressed as text, for this experience product.	0	1	Text
BBIE	Description	The textual description of this experience product.	0	1	Text
BBIE	Certified Person Arrangement Indicator	The indication whether or not a certified person arrangement is made for this experience product.	0	1	Indicator
BBIE	Maximum Unit Quantity	The maximum number of units of this experience product.	0	1	Quantity
BBIE	Minimum Unit Quantity	The minimum number of units of this experience product.	0	1	Quantity

Type	Short Name	Definition	Min Occur.	Max Occur.	Data type
BBIE	Applicable Quantity Unit Type Code	The code specifying the type of quantity unit applicable for this specified experience product.	0	1	Code
BBIE	Required Reservation Guarantee Indicator	The indication whether or not this experience product requires a reservation guarantee.	0	1	Indicator
ASBIE	Included Experience Event	An included event for this experience product.	0	*	
ASBIE	Optional Experience Product	An optional product for this experience product.	0	*	
ASBIE	Provided Certificate	A certificate provided for this experience product.	0	*	
ASBIE	Provided Requirement	A specified requirement provided for this experience product.	0	*	
ASBIE	Distinctive feature	A distinctive feature for this experience product.	0	*	
ASBIE	Operational Period	A specified operational period for this experience product.	0	*	
ASBIE	Required Usage Condition	A required specified usage condition for this experience product.	0	*	
ASBIE	Applicable Note	An applicable note for this experience product.	0	*	
ASBIE	Daily Calculated Price	A daily calculated trade price for this experience product.	0	*	
ASBIE	Specified Party	A trade party specified for this experience product.	0	*	
ABIE	Experience Program Action	Any type of action such as to search, reserve, pay, necessary to trade an organized program in which participants are involved in one or more types of happenings, such as adventure experience, business experience, wellness experience, etc.			
BBIE	Type Code	The code specifying the type of experience program action.	0	1	Code
BBIE	Type Text	The type, expressed as text, of experience program action.	0	1	Text
BBIE	Status Code	The code specifying the status of this experience program action.	0	1	Code
BBIE	Description	The textual description for this experience program action.	0	1	Text
ASBIE	Specified Party	The trade party specified for this experience program action.	0	1	
ASBIE	Buyer	The buyer trade party for this experience program action.	0	1	
ABIE	Financial Guarantee	An official promise or assurance to fulfil a financial obligation.			
BBIE	Liability Amount	The monetary value of the liability in this financial guarantee.	0	1	Amount
BBIE	Condition Text	The condition, expressed as text, for this financial guarantee.	0	1	Text
BBIE	Description	The textual description of this financial guarantee.	0	1	Text
ABIE	Guest Allergy State	The condition of the abnormal reaction of the body of a guest to a previously encountered allergen introduced by inhalation, ingestion, injection, or skin contact.			
BBIE	Name	The name, expressed as text, of this guest allergy state.	0	1	Text

Type	Short Name	Definition	Min Occur.	Max Occur.	Data type
BBIE	Type Code	The code specifying the type of guest allergy state.	0	1	Code
BBIE	Restriction Text	The restriction, expressed as text, of this guest allergy state.	0	1	Text
BBIE	Description	The textual description of this guest allergy state.	0	1	Text
ABIE	Guest Carrying Equipment	A tool or device usable in a tour or activity which a guest takes along with himself.			
BBIE	Name	The name, expressed as text, for this guest carrying equipment.	0	1	Text
BBIE	Type Code	The code specifying the type of guest carrying equipment.	0	1	Code
BBIE	Restriction Text	The restriction, expressed as text, for this guest carrying equipment.	0	1	Text
BBIE	Description	The textual description of this guest carrying equipment.	0	1	Text
ASBIE	Specification Note	A specification note specified of this guest carrying equipment.	0	*	
ABIE	Guest Disability State	A physical or mental condition that limits a guest's movements, senses, or activities.			
BBIE	Name	The name, expressed as text, for this guest disability state.	0	1	Text
BBIE	Type Code	The code specifying the type of guest disability state.	0	1	Code
BBIE	Required Supporting Device Text	The required supporting device, expressed as text, for this guest disability state.	0	1	Text
BBIE	Restriction Text	The restriction, expressed as text, for this guest disability state.	0	1	Text
BBIE	Registered Date Time	The date, time, date time, or other date time value when this guest disability state has been registered.	0	1	Formatted Date Time
BBIE	Description	The textual description of this guest disability state.	0	1	Text
ABIE	Guest Food Choice	A guest's decision which food to buy or eat.			
BBIE	Name	The name, expressed as text, for this guest food choice.	0	1	Text
BBIE	Type Code	The code specifying the type of guest food choice.	0	1	Code
BBIE	Restriction Text	The restriction, expressed as text, for this guest food choice.	0	1	Text
BBIE	Description	The textual description of this guest food choice.	0	1	Text
ABIE	Guest Health Indication	A guest's physical or mental condition that leads to the recommendation or suggestion of an experience product or service.			
BBIE	Status Text	The status, expressed as text, for this health indication.	0	1	Text
BBIE	Type Code	The code specifying the type of guest health indication.	0	1	Code
BBIE	Restriction Text	The restriction, expressed as text, for this health indication.	0	1	Text
BBIE	Description	The textual description of this guest health indication.	0	1	Text
ABIE	Guest Person	An individual guest.			
BBIE	ID	The identifier for this guest.	0	1	Identifier
BBIE	Name	The name, expressed as text, by which this guest is known.	0	1	Text

Type	Short Name	Definition	Min Occur.	Max Occur.	Data type
BBIE	Title	The title, expressed as text, associated with this guest, such as Doctor, Mr., Mrs., Ms.	0	1	Text
BBIE	Gender Code	The code specifying the gender of this guest, such as male, female.	0	1	Code
BBIE	Birth Date Time	The date, time, date time, or other date time value which specifies the birth date for this guest.	0	1	Formatted Date Time
BBIE	Description	The textual description of this guest.	0	1	Text
BBIE	Passport ID	The identifier of the passport of this guest.	0	1	Identifier
BBIE	Title Code	The code specifying the title of this guest person.	0	1	Code
BBIE	Role Code	The code specifying the role of this guest person.	0	1	Code
BBIE	Age	The value, expressed as a number, for the age of this guest person.	0	1	Numeric
BBIE	Residence Country ID	The identifier of the residence country of this guest person.	0	1	Identifier
ASBIE	Informed Guest Arrival	Informed guest arrival details for this guest person.	0	*	
ASBIE	Raised Special Query	A raised experience item query of this guest person.	0	*	
ASBIE	Applicable Note	An applicable note for this guest person.	0	*	
ASBIE	Accompanying. Pet Animal	A pet animal accompanying this guest person.	0	*	
ASBIE	Guest Carrying Equipment	A carrying equipment specified for this guest person.	0	*	
ASBIE	Informed Guest Disability State	An informed disability state for this guest person.	0	*	
ASBIE	Informed Guest Allergy State	An informed allergy state for this guest person.	0	*	
ASBIE	Informed Disease Protection Means	An informed disease protection means for this guest person.	0	*	
ASBIE	Informed Guest Health Indication	An informed health indication for this guest person.	0	*	
ASBIE	Informed Experience Item Preference	An informed experience item preference for this guest person.	0	*	
ASBIE	Informed Guest Food Choice	An informed food choice for this guest person.	0	*	
ASBIE	Travel Insurance Certificate	A travel insurance certificate of this guest person.	0	*	
ASBIE	Carrying Certificate	A certificate carried by this guest person.	0	*	
ASBIE	Claimed Personal Language Proficiency.	Personal language proficiency skills claimed by this guest person.	0	*	
ASBIE	Specified Payment Means.	A trade settlement payment means for this guest person.	0	*	
ABIE	Payment Cash	Coins, banknotes paid by the recipient of goods or services to the provider.			
BBIE	Type Code	The code specifying the type of cash payment.	0	1	Code
BBIE	Currency Code	The identifier of the currency for this cash payment.	0	1	Identifier
BBIE	Description	The textual description of this cash payment.	0	1	Text
BBIE	Applicable Indicator	The indication whether or not this payment cash is applicable.	0	1	Indicator

Type	Short Name	Definition	Min Occur.	Max Occur.	Data type
ABIE	Payment Coupon	Coupon is a document by which travel products or services have been paid, and usually has a face amount, which could also facilitate money exchange.			
BBIE	Face Amount	The monetary value shown on the face of this payment coupon.	0	1	Amount
BBIE	Type Code	The code specifying the type of payment coupon.	0	1	Code
BBIE	ID	The identifier for this payment coupon.	0	1	Identifier
BBIE	Issue Date Time	The date of the issuance of this payment coupon.	0	1	Formatted Date Time
BBIE	Issuing Company Name	The name, expressed as text, of the company issuing this payment coupon.	0	1	Text
BBIE	Description	The textual description of this payment coupon.	0	1	Text
BBIE	Applicable Indicator	The indication whether or not this payment coupon is applicable.	0	1	Indicator
ABIE	Payment Cheque	A written payment order to a bank to pay the stated sum from the drawer's account.			
BBIE	Type Code	The code specifying the type of payment cheque.	0	1	Code
BBIE	Delivery Method Text	The delivery method, expressed as text, for this payment cheque.	0	1	Text
BBIE	Memo Field Text	The memo field, expressed as text, for this payment cheque.	0	1	Text
BBIE	Number	The value, expressed as a number, for this payment cheque.	0	1	Numeric
BBIE	Description	The textual description of this payment cheque.	0	1	Text
BBIE	Applicable Indicator	The indication whether or not this payment cheque is applicable.	0	1	Indicator
ABIE	Payment Digital Method	The use of online and digital technologies to collect monetary payment amounts.			
BBIE	ID	The identifier of this payment digital method.	0	1	Identifier
BBIE	Type Code	The code specifying the type of payment digital method.	0	1	Code
BBIE	Cardholder Name	The cardholder's name, expressed as text, for this payment digital method.	0	1	Text
BBIE	Expiry Date	The date of expiration of this payment digital method.	0	1	Formatted Date Time
BBIE	Verification Number	The value, expressed as a verification number, for this payment digital method.	0	1	Numeric
BBIE	Valid From Date	The date from when this payment digital method is valid.	0	1	Formatted Date Time
BBIE	Issuing Company Name	The issuing company name, expressed as text, for this payment digital method.	0	1	Text
BBIE	Description	The textual description of this payment digital method.	0	1	Text
BBIE	Applicable Indicator	The indication whether or not this payment digital method is applicable.	0	1	Indicator
ABIE	Payment Financial Account	A specific business arrangement whereby monetary values pertaining to payment, collected or paid, are recorded.			
BBIE	IBAN ID	The unique International Bank Account Number (IBAN) identifier for this payment financial account.	0	1	Identifier

Type	Short Name	Definition	Min Occur.	Max Occur.	Data type
BBIE	ID	The identifier for this payment financial account.	0	1	Identifier
BBIE	Type Code	The code specifying the type of payment financial account, such as savings, chequing.	0	1	Code
BBIE	Account Name	The account name, expressed as text, of this payment financial account.	0	1	Text
BBIE	Currency Code	The code specifying the currency of this payment financial account (Reference ISO 4217 codes).	0	1	Currency Code
ABIE	Payment Financial Institution	An institution that provides financial services and financial transactions for payment.			
BBIE	Name	The name, expressed as text, for this payment financial institution.	0	1	Text
BBIE	Name ID	The identifier of the name for this payment financial institution.	0	1	Identifier
BBIE	Name ID	The identifier for this payment financial institution.	0	1	Identifier
BBIE	Type Code	The code specifying the type of payment financial institution.	0	1	Code
BBIE	Branch Name	The branch name, expressed as text, for this payment financial institution.	0	1	Text
BBIE	Branch Name ID	The identifier of the branch name for this payment financial institution.	0	1	Identifier
ASBIE	Specified Communication	A universal communication specified for this payment financial institution.	0	*	
ASBIE	Payment Financial Account	A payment financial account specified for this payment financial institution.	0	*	
ABIE	Payment Trade Settlement	The information that enables the reconciliation of a payment with the item(s) that the payment is intended to settle, for example a commercial invoice.			
BBIE	Instruction Text	The instruction, expressed as text, for this payment trade settlement.	0	1	Text
BBIE	Payment Currency Code	The code specifying the currency for this payment trade settlement.	0	1	Currency Code
BBIE	Paid Amount	The monetary value of the payment for this trade settlement payment.	0	1	Amount
BBIE	Requested Amount	The requested monetary value of this payment trade settlement.	0	1	Amount
BBIE	Accepted Amount	The accepted monetary value of this payment trade settlement.	0	1	Amount
BBIE	Tax Amount	The tax monetary value of this payment trade settlement.	0	1	Amount
BBIE	Refund Amount	The refund monetary value of this payment trade settlement.	0	1	Amount
BBIE	Creation Date Time	The date, time, date time, or other date time value when this payment trade settlement has been created.	0	1	Formatted Date Time
BBIE	Due Data Time	The date, time, date time, or other date time value whenwhen this payment trade settlement is due.	0	1	Formatted Date Time
BBIE	Received Date Time	The date, time, date time, or other date time value of the receipt of this payment trade settlement.	0	1	Formatted Date Time
BBIE	Transfer Fee Inclusive Indicator	The indication whether or not this payment trade settlement includes a transfer fee.	0	1	Indicator

Type	Short Name	Definition	Min Occur.	Max Occur.	Data type
BBIE	Invoice Payer Assigned Reference ID	The identifier of the invoice payer assigned reference of this payment trade settlement.	0	1	Identifier
BBIE	Priority Code	The code specifying the priority of this payment trade settlement.	0	1	Code
BBIE	Status Code	The code specifying the status of this payment trade settlement.	0	1	Code
BBIE	Reason Code	The code specifying the reason of this payment trade settlement.	0	1	Code
BBIE	Penalty Percentage	The penalty percentage of this payment trade settlement.	0	1	Percent
BBIE	Additional description	The description, expressed as text, of additional information supplied to enable the matching of an entry with the items that the payment is intended to settle.	0	1	Text
ASBIE	Payer	The payer for this payment trade settlement.	0	1	
ASBIE	Identified Financial Guarantee	The identified financial guarantee for this payment trade settlement.	0	1	
ASBIE	Identified Trade Settlement Payment Means	The identified payment means for this payment trade settlement.	0	1	
ASBIE	Recorded Experience Item	A recorded experience item for this trade party.	0	*	
ABIE	Personal Language Proficiency	Skills in any principal method of human communication, consisting of words used in a structured and conventional way and conveyed by speech, writing, or gesture.			
BBIE	Language Code	The code specifying the language for this personal language proficiency.	0	1	Language Code
BBIE	Speaking Proficiency Level Code	The code specifying the personal speaking proficiency level in this language.	0	1	Code
ABIE	Pet Animal	A pet is an animal that you keep in your home to give you company and pleasure.			
BBIE	Category Code	The code specifying the category for this pet animal.	0	1	Code
BBIE	Allowed Indicator	The indication whether or not this pet animal is allowed.	0	1	Indicator
BBIE	Restriction Text	The restriction, expressed as text, for this pet animal.	0	1	Text
BBIE	Description	The textual description of this pet animal.	0	1	Text
ABIE	Special Query	A special question or request for information.			
BBIE	ID	The identifier of this special query.	0	1	Identifier
BBIE	Submitted Date Time	The date, time, date time, or other date time value on which this special query has been submitted.	0	1	Formatted Date Time
BBIE	Submitting Person Name	The submitting person name, expressed as text, for this special query.	0	1	Text
BBIE	Subject Text	The subject, expressed as text, for this special query.	0	1	Text
BBIE	Content	The content, expressed as text, for this special query.	0	1	Text
BBIE	Version ID	The identifier of the version for this special query.	0	1	Identifier
BBIE	Response Date Time	The date, time, date time, or other date time value of the response for this special query.	0	1	Formatted Date Time

Type	Short Name	Definition	Min Occur.	Max Occur.	Data type
BBIE	Response Status Code	The code specifying the response status of this special query.	0	1	Code
ABIE	Specified Feature	A specified distinctive or characteristic part of an object.			
BBIE	Keyword Marketing Phrase Text	The keyword marketing phrase, expressed as text, for this feature.	0	1	Text
BBIE	Marketing Phrase Text	The marketing phrase, expressed as text, for this feature.	0	1	Text
BBIE	Type Code	The code specifying the type of feature.	0	1	Code
BBIE	Objective Text	The objective, expressed as text, for this feature.	0	1	Text
BBIE	Usage Code	The code specifying the usage for this feature.	0	1	Code
BBIE	Description	The textual description of this feature.	0	1	Text
ABIE	Specified Information Source	The origin of data being specified.			
BBIE	Name	The name, expressed as text, of this specified information source.	0	1	Text
BBIE	Category Code	The code specifying the category of this specified information source.	0	1	Code
BBIE	Content Text	The context, expressed as text, of this specified information source.	0	1	Text
BBIE	Security Information	Security information, expressed as text, of this specified information source.	0	1	Text
BBIE	Website	The website URI (Uniform Resource Identifier) identifier of this specified information source.	0	1	Identifier
BBIE	Description	The textual description of this specified information source.	0	1	Text
ABIE	Specified Certificate	A document issued by a government, public organization or association to prove the capability of a person, entity, object or process, such as a company certificate, product certificate, process certificate, vaccination certificate.			
BBIE	Type Code	A code specifying a type of specified certificate.	0	*	Code
BBIE	Category Code	A code specifying a category for this specified certificate.	0	*	Code
BBIE	Name	A name, expressed as text, for this specified certificate.	0	*	Text
BBIE	Purpose Code	A code specifying a purpose of this specified certificate.	0	*	Code
BBIE	Capability Level Text	The capability level, expressed as text, for this specified certificate.	0	1	Text
BBIE	Issue Date Time	The issue date, time, date time, or other date time value for this specified certificate.	0	1	Formatted Date Time
BBIE	Available Language Code	A code specifying a language for this specified certificate.	0	*	Language Code
BBIE	Expiry Date Time	The expiry date, time, date time, or other date time value for this specified certificate.	0	1	Formatted Date Time
BBIE	Number of Certified Person	The value, expressed as a number of certified persons, for this specified certificate.	0	1	Numeric
BBIE	Applicable Geographic Region Text	The geographic region, expressed as text, applicable to this specified certificate.	0	1	Text

Type	Short Name	Definition	Min Occur.	Max Occur.	Data type
BBIE	Description	A textual description of this specified certificate.	0	*	Text
BBIE	Obligatory Indicator	The indication whether or not this specified certificate is obligatory.	0	1	Indicator
BBIE	Valid From Date Time	The date, time, date time, or other date time value from which this specified certificate is valid.	0	1	Formatted Date Time
ASBIE	Certified Person	The certified person specified for this certificate.	0	1	
ASBIE	Issuer	The issuer party for this specified certificate.	0	1	
ASBIE	Providing Party	The party providing this specified certificate.	0	1	
ABIE	Specified Customer Class	The conditions and requirements of the type of person who may use or purchase a product or service.			
BBIE	Category Code	The code specifying the category of a specified customer class, such as adult or child.	0	1	Code
BBIE	Category Name	The category name, expressed as text, of a specified customer class.	0	1	Text
BBIE	Upper Age Limit Number	The value, expressed as a number of years, for the upper age limit for the category of this specified customer class.	0	1	Numeric
BBIE	Lower Age Limit Number	The value, expressed as a number of years, for the lower age limit for the category of this specified customer class.	0	1	Numeric
BBIE	Gender Code	The code specifying the gender in a specified customer class.	0	1	Code
BBIE	Meal Service Category Code	The code specifying the meal service category for a specified customer class.	0	1	Code
BBIE	Special Bedding Service Indicator	The indication whether or not special bedding service is offered for a specified customer class.	0	1	Indicator
BBIE	Description	The textual description of a specified customer class.	0	1	Text
ABIE	Specified Experience Item	A collection of information specific to the involvement of a person in a happening, such as a theme park, a guided tour being used or reported on for trade purposes.			
BBIE	ID	The identifier of this specified experience item.	0	1	Identifier
BBIE	Theme Type Code	The code specifying the type of theme for this specified experience item.	0	1	Code
BBIE	Category Code	The code specifying the category for this specified experience item.	0	1	Code
BBIE	Status Code	The code specifying the status for this specified experience item.	0	1	Code
BBIE	Response Status Code	The code specifying the response status for this specified experience item.	0	1	Code
BBIE	Theme Text	The theme, expressed as text, of this specified experience item.	0	1	Text
BBIE	Capability Level Text	The capability level, expressed as text, of this specified experience item.	0	1	Text
BBIE	Description	The textual description of this specified experience item.	0	1	Text
BBIE	Name	The name, expressed as text, of this specified experience item.	0	1	Text

Type	Short Name	Definition	Min Occur.	Max Occur.	Data type
BBIE	Brand Name	The brand name, expressed as text, of this specified experience item.	0	1	Text
BBIE	Destination Text	The destination, expressed as text, for this specified experience item.	0	1	Text
BBIE	Reservation Guarantee Text	The reservation guarantee, expressed as text, for this specified experience item.	0	1	Text
BBIE	Instruction Text	The instruction, expressed as text, for this specified experience item.	0	1	Text
BBIE	Indemnity Clause Text	The indemnity clause, expressed as text, for this specified experience item.	0	1	Text
BBIE	Unit Quantity	The number of units for this specified experience item.	0	1	Quantity
BBIE	Applicable Quantity Unit Type Code	The code specifying the type of quantity unit applicable for this specified experience item.	0	1	Code
BBIE	Available Unit Quantity	The number of units available for this experience item.	0	1	Quantity
BBIE	Maximum Number Of Guest	The value, expressed as a maximum number of guests, of this specified experience item.	0	1	Numeric
BBIE	Minimum Number Of Guest	The value, expressed as a minimum number of guests, of this specified experience item.	0	1	Numeric
BBIE	Upper Price Limit Amount	The monetary value of the upper price limit of this specified experience item.	0	1	Amount
BBIE	Lower Price Limit Amount	The monetary value of the lower price limit of this specified experience item.	0	1	Amount
BBIE	Guest Special Care Indicator	The indication whether or not guest special care is applicable for this experience item.	0	1	Indicator
ASBIE	Specified Party	The trade party specified for this specified experience item.	0	1	
ASBIE	Available Experience Product	An available product for this specified experience item.	0	*	
ASBIE	Available Period	An available period for this specified experience item.	0	*	
ASBIE	Applicable Period	An applicable period for this specified experience item.	0	*	
ASBIE	Visiting Period	A visiting period for this specified experience item.	0	*	
ASBIE	Daily Calculated Price	A daily calculated trade price for this experience item.	0	*	
ABIE	Specified Guest Arrival	The act of coming to or reaching a place by a specified guest.			
BBIE	Transport Mode Code	The code specifying the transport mode of this guest arrival.	0	1	Code
BBIE	Expected Date Time	The date, time, date time, or other date time value when this guest arrival is expected.	0	1	Formatted Date Time
BBIE	Carrier ID	The identifier of the carrier of this guest arrival.	0	1	Identifier
BBIE	Carrier Name	The carrier's name, expressed as text, for this guest arrival.	0	1	Text
ABIE	Specified Location	A specified physical location or place.			
BBIE	Name	The name, expressed as text, for this specified location.	0	1	Text
BBIE	Direction Text	The direction, expressed as text, for this specified location.	0	1	Text

Type	Short Name	Definition	Min Occur.	Max Occur.	Data type
BBIE	Description	The textual description for this specified location.	0	1	Text
BBIE	Map URI ID	The Uniform Resource Identifier (URI) of the map for this specified location.	0	1	Identifier
ASBIE	Specified Address	A trade address specified for this location.	0	*	
ABIE	Specified Membership	The state of belonging to a group, such as a club or trade association.			
BBIE	Name	The name, expressed as text, for this specified membership.	0	1	Text
BBIE	ID	The identifier of this specified membership.	0	1	Identifier
BBIE	Start Date Time	The date, time, date time, or other date time value of the start of this specified membership.	0	1	Formatted Date Time
BBIE	End Date Time	The date, time, date time, or other date time value of the end of this specified membership.	0	1	Formatted Date Time
BBIE	Description	The textual description of this specified membership.	0	1	Text
ABIE	Specified Note	A specified textual or coded description, such as a remark or additional information.			
BBIE	Subject Text	The subject, expressed as text, of this specified note.	0	1	Text
BBIE	Subject Code	The code specifying the subject of this specified note.	0	1	Subject Code
BBIE	Creation Date Time	The date, time, date time, or other date time value for the creation of this specified note.	0	1	Formatted Date Time
BBIE	ID	The unique identifier of this specified note.	0	1	Identifier
BBIE	Description	The textual description of this specified note.	0	1	Text
BBIE	Name	The name, expressed as text, of this specified note.	0	1	Text
BBIE	Content Text	The content, expressed as text, of this specified note.	0	1	Text
ABIE	Specified Period	A specified period of time.			
BBIE	Type Code	The code specifying the type of specified period.	0	1	Code
BBIE	Start Date Time	The date, time, date time or other date time value for the start of this specified period of time.	0	1	Formatted Date Time
BBIE	End Date Time	The date, time, date time or other date time value for the end of this specified period of time.	0	1	Formatted Date Time
BBIE	Description	A textual description of this specified period of time.	0	*	Text
BBIE	ID	The unique identifier of this specified period.	0	1	Identifier
BBIE	Purpose Code	The code specifying the purpose of this specified period.	0	1	Code
BBIE	Name	A name, expressed as text, of this specified period.	0	*	Text
BBIE	Start Day Of Week Code	The code specifying the start day of the week for this specified period.	0	1	Code
BBIE	End Day Of Week Code	The code specifying the end day of the week for this specified period.	0	1	Code
BBIE	Number Of Day	The value, expressed as a number of days, for this specified period.	0	1	Numeric

Type	Short Name	Definition	Min Occur.	Max Occur.	Data type
BBIE	Number Of Night	The value, expressed as a number of nights, for this specified period.	0	1	Numeric
BBIE	Duration Text	The duration, expressed as text, for this specified period.	0	1	Text
BBIE	Minimum Duration Measure	The measure of the minimum length of time for this specified period such as hours, days, weeks, months, years.	0	1	DurationUnit Measure
BBIE	Maximum Duration Measure	The measure of the maximum length of time for this specified period such as hours, days, weeks, months, years.	0	1	DurationUnit Measure
ABIE	Specified Requirement	Common conditions contained in a contract or agreement applicable between trading partners.			
BBIE	Type Code	The code specifying the type of specified requirement.	0	1	Code
BBIE	Rule Text	The rule, expressed as text, for this specified requirement.	0	1	Text
BBIE	Description	The textual description of this specified requirement.	0	1	Text
ASBIE	Payment	The payment trade settlement specified for this specified requirement.	0	1	
ASBIE	Specifying Party	The trade party specifying this requirement.	0	1	
ABIE	Specified Route	A specified way or course taken from one location to another.			
BBIE	Map URI ID	The Uniform Resource Identifier (URI) of the map for this specified route.	0	1	Identifier
BBIE	Departure Point Text	The departure point, expressed as text, for this specified route.	0	1	Text
BBIE	Transport Means Text	The transport means, expressed as text, for this specified route.	0	1	Text
BBIE	Distance Measure	The measure of the distance of this specified route.	0	1	LinearUnit Measure
BBIE	Security Level Code	The code specifying the security level of this specified route.	0	1	Code
BBIE	Type Text	The type, expressed as text, for this specified route.	0	1	Text
BBIE	Status Code	The code specifying the status of this specified route.	0	1	Code
BBIE	Description	The textual description of this specified route.	0	1	Text
ABIE	Specified Usage Condition	The particular state of something, affected by use, that should be respected.			
BBIE	Age Limitation Text	The age limitation, expressed as text, for this specified usage condition.	0	1	Text
BBIE	Gender Limitation Text	The gender limitation, expressed as text, for this specified usage condition.	0	1	Text
BBIE	Appropriate Clothing Text	The appropriate clothing, expressed as text, for this specified usage condition.	0	1	Text
BBIE	Occupancy Text	The occupancy, expressed as text, for this specified usage condition.	0	1	Text
BBIE	Duration Text	The duration, expressed as text, for this specified usage condition.	0	1	Text
BBIE	Description	The textual description of this specified usage condition.	0	1	Text
ASBIE	Requiring Party	The trade party requiring to this usage condition.	0	1	

Type	Short Name	Definition	Min Occur.	Max Occur.	Data type
ABIE	Sustainability Assertion	A statement that user needs of the present are met without compromising the needs of future generations.			
BBIE	Description	A textual description of this sustainability assertion.	0	*	Text
ABIE	Trade Address	The location at which a particular trade related organization or person may be found or reached.			
BBIE	Postcode	A code specifying the postcode of this trade address.	0	*	Code
BBIE	Free Form Text	A free form representation, expressed as text, of this trade address.	0	*	Text
BBIE	Country ID	The unique identifier of a country for this trade address.	0	1	Identifier
BBIE	Country Name	A name, expressed as text, of the country for this trade address.	0	*	Text
BBIE	Invalid Indicator	The indication whether or not this trade address is valid.	0	1	Indicator
BBIE	Description	The textual description of this trade address.	0	1	Text
ABIE	Trade Contact	A person or a department that acts as a point of contact with another person or department in a trading relationship.			
BBIE	Person Name	The name, expressed as text, of this trade contact person.	0	1	Text
BBIE	Job Title Text	The job title, position or designation, expressed as text, of this trade contact within an organization, such as Director, Software Engineer, Purchasing Manager.	0	1	Text
BBIE	Responsibility Text	A responsibility, expressed as text, of this trade contact.	0	*	Text
BBIE	Department Name	The name, expressed as text, of the department to which this trade contact belongs within an organization.	0	1	Text
BBIE	Description	The textual description of this trade contact.	0	1	Text
ASBIE	Used Communication	A universal communication used by this trade contact.	0	*	
ASBIE	Accessible Location	An accessible specified location for this trade contact.	0	*	
ABIE	Trade Contract	An agreement between two or more parties for trade purposes.			
BBIE	Name	The name, expressed as text, for this trade contract.	0	1	Text
BBIE	ID	The unique identifier of this trade contract.	0	1	Identifier
BBIE	Signature Name	The signature name, expressed as text, for this trade contract.	0	1	Text
BBIE	Signer Job Title	The job title of the signer, expressed as text, for this trade contract.	0	1	Text
BBIE	Signed Date Time	The date, time, date time or other date time value when this trade contract was signed.	0	1	Formatted Date Time
BBIE	Automatic Extension Date Time	The date, time, date time, or other date time value of automatic extension of this trade contract.	0	1	Formatted Date Time
BBIE	Automatic Extension Period Measure	The measure of the extension period for this trade contract.	0	1	DurationUnit Measure
BBIE	Description	The textual description of this trade contract.	0	1	Text
ASBIE	Signed Location	A signed location for this trade contract.	0	*	

Type	Short Name	Definition	Min Occur.	Max Occur.	Data type
ABIE	Trade Party	An individual, a group, or a body having a role in a trade business function.			
BBIE	Name	The name, expressed as text, for this trade party.	0	1	Text
BBIE	Type Code	A code specifying the type of trade party that is independent of its role.	0	*	Code
BBIE	ID	A unique identifier of this trade party.	0	*	Identifier
BBIE	Brand Name	The brand name, expressed as text, for this trade party.	0	1	Text
BBIE	Business Type Code	The code specifying the business type of this trade party.	0	1	Code
BBIE	Chain Name	The chain name, expressed as text, for this trade party.	0	1	Text
BBIE	Alliance Name	The alliance name, expressed as text, for this trade party.	0	1	Text
BBIE	Sales Manager Name	The sales manager, expressed as text, for this trade party.	0	1	Text
BBIE	Description	A textual description of this trade party.	0	*	Text
ASBIE	Claimed Personal Language Proficiency.	Personal language proficiency skills claimed by this trade party.	0	*	
ASBIE	Agreed Contract	A trade contract agreed by this trade party.	0	*	
ASBIE	Defined Contact	A trade contact defined for this trade party.	0	*	
ASBIE	Commented Review Note	A commented review note specified for this trade party.	0	*	
ASBIE	Cooperative Information Source	A cooperative information source specified for this trade party.	0	*	
ASBIE	Associated Membership	An associated membership for this trade party.	0	*	
ASBIE	Requested Experience Item	A requested experience item for this trade party.	0	*	
ASBIE	Available Experience Item	An available experience item for this trade party.	0	*	
ASBIE	Reserved Experience Item	A reserved experience item for this trade party.	0	*	
ASBIE	Searched Wish List Experience Item	An experience item searched wish list for this trade party.	0	*	
ASBIE	Guest Person	A guest person specified for this trade party.	0	*	
ASBIE	Available Experience Facility	An available experience facility for this trade party.	0	*	
ASBIE	Cooperating Organization	A cooperating organization specified for this trade party.	0	*	
ASBIE	Sustainability Assertion	The sustainability assertion specified for this trade party.	0	1	
ABIE	Trade Price	A sum of money for which something is or may be bought or sold for trade purposes.			
BBIE	Type Code	The code specifying the type of trade price.	0	1	Code
BBIE	Type Text	A type, expressed as text, for this trade price.	0	*	Text
BBIE	Description	The textual description of this trade price.	0	1	Text
BBIE	Bracket Type Code	The code specifying the type of bracket for this trade price.	0	1	Code
BBIE	Determination Code	The code specifying the determination of this trade price.	0	1	Code

Type	Short Name	Definition	Min Occur.	Max Occur.	Data type
BBIE	Expiry Date Time	The date, time, date time, or other date time value of expiration for this trade price.	0	1	Formatted Date Time
BBIE	Number Of Day	The value, expressed as a number of days, for this trade price.	0	1	Numeric
BBIE	Information	Information, expressed as text, for this trade price.	0	*	Text
BBIE	Cancellation Percentage	The cancellation percentage for this trade price.	0	1	Percent
BBIE	Calculation Percentage	The calculation percentage for this trade price.	0	1	Percent
BBIE	Customer Service Point Quantity	The number of units of customer service points for this trade price.	0	1	Quantity
BBIE	Net Price Indicator	The indication whether or not the trade price is the net price.	0	1	Indicator
BBIE	Reason Code	A code specifying a reason for this trade price.	0	*	Code
BBIE	Multiple Reason Indicator	The indication of whether or not multiple reasons affect this trade price.	0	1	Indicator
BBIE	Charge Amount	A monetary value of the trade price charge.	0	*	Amount
BBIE	Total Charge Amount	The monetary value of the total charge of this trade price.	0	1	Amount
BBIE	Grand Total Charge Amount	The monetary value of the grand total charge of this trade price.	0	1	Amount
ASBIE	Payment	A payment trade settlement for this trade price.	0	*	
ASBIE	Charged Service Price	A charged service price for this trade price.	0	*	
ASBIE	Charged Dynamic Price	A charged dynamic price for this trade price.	0	*	
ASBIE	Charged Basic Price	A charged basic price for this trade price.	0	*	
ASBIE	Charged Extra Price	A charged extra price for this trade price.	0	*	
ASBIE	Charged Discount Price	A charged discount price for this trade price.	0	*	
ASBIE	Included Tax	A tax included in this trade price.	0	*	
ASBIE	Charged Cancellation Price	A charged cancellation price for this trade price.	0	*	
ASBIE	Charged Refund Price	A charged refund price for this trade price.	0	*	
ASBIE	Charged Commission Price	A charged commission price for this trade price.	0	*	
ASBIE	Charged Penalty Price	A charged penalty price for this trade price.	0	*	
ASBIE	Applicable Customer Class	A specified customer class applicable to this trade price.	0	*	
ASBIE	Applicable Seasonal Period	An applicable seasonal period specified for this trade price.	0	*	
ASBIE	Applicable Operational Period	An applicable operational period specified for this trade price.	0	*	
ASBIE	Applicable Note	A specified note applicable to this trade price.	0	*	
ABIE	Trade Tax	A trade related fiscal levy or duty.			
BBIE	Type Code	The code specifying the type of trade related tax, levy or duty, such as a code for a Value Added Tax (VAT) [Reference United Nations Code List (UNCL) 5153].	0	1	Code

Type	Short Name	Definition	Min Occur.	Max Occur.	Data type
BBIE	Category Code	The code specifying the category to which this trade related tax, levy or duty applies, such as codes for "Exempt from Tax", "Standard Rate", "Free Export Item - Tax Not Charged" [Reference United Nations Code List (UNCL) 5305].	0	1	Code
BBIE	Charge Amount	A monetary value resulting from the calculation of this trade related tax, levy or duty.	0	*	Amount
BBIE	Basis Charge Amount	A monetary value used as the basis on which this trade related tax, levy or duty is calculated.	0	*	Amount
BBIE	Identification	The identifier of this trade tax.	0	1	Identifier
BBIE	Local Tax System	The identifier of the local tax system for this trade tax.	0	1	Identifier
BBIE	Description	A textual description of this trade related tax, levy or duty.	0	*	Text
ABIE	Trade Settlement Financial Card	A card used to represent a financial account for a trade settlement.			
BBIE	ID	The unique identifier, commonly known as the card number, of this trade settlement financial card.	0	1	Identifier
BBIE	Type Code	The code specifying the type of this trade settlement financial card, such as debit or credit.	0	1	Code
BBIE	Cardholder Name	The cardholder name as an authorized individual and/or owner organization, expressed as text, on this trade settlement financial card.	0	1	Text
BBIE	Expiry Date	The date of expiry up to which this trade settlement financial card is valid.	0	1	Formatted Date Time
BBIE	Verification Number	The unique card verification number for security purposes to help verify the card user is in actual possession of this trade settlement financial card.	0	1	Numeric
BBIE	Valid From Date	The date from which this trade settlement financial card is valid.	0	1	Formatted Date Time
BBIE	Issuing Company Name	The issuing company name, expressed as text, for this trade settlement financial card.	0	1	Text
BBIE	Description	The textual description of this trade settlement financial card.	0	1	Text
BBIE	Applicable Indicator	The indication whether or not this trade settlement financial card is applicable.	0	1	Indicator
BBIE	Applicable Indicator	The indication whether or not this trade settlement financial card is applicable.	0	1	Indicator
ABIE	Trade Settlement Payment Means	The means by which a payment will be or has been made for trade settlement purposes.			
BBIE	Type Code	The code specifying the type of trade settlement payment means, such as cash or check.	0	1	Payment Means Code
BBIE	Information	Information, expressed as text, for this trade settlement payment means.	0	*	Text
ASBIE	Payment Financial Institution	A specified payment financial institution of this trade settlement payment means.	0	*	

Type	Short Name	Definition	Min Occur.	Max Occur.	Data type
ASBIE	Debtor Payment Financial Institution	A debtor payment financial institution of this trade settlement payment means.	0	*	
ASBIE	Creditor Payment Financial Institution	A creditor payment financial institution of this trade settlement payment means.	0	*	
ASBIE	Financial Card	A trade settlement financial card specified for this trade settlement payment means.	0	*	
ASBIE	Payment Digital Method	A payment digital method specified for this trade settlement payment means.	0	*	
ASBIE	Payment Cash	A cash payment specified for this trade settlement payment means.	0	*	
ASBIE	Payment Cheque	A cheque payment specified for this trade settlement payment means.	0	*	
ASBIE	Travel Voucher	A travel voucher specified for this trade settlement payment means.	0	*	
ASBIE	Payment Coupon	A coupon payment specified for this trade settlement payment means.	0	*	
ABIE	Travel Voucher	A document exchangeable for travel products or services by which the payment will be or has been made.			
BBIE	Type Code	The code specifying the type of travel voucher.	0	1	Code
BBIE	ID	The identifier for this travel voucher.	0	1	Identifier
BBIE	Issue Date Time	The date, time, date time, or other date time value of the issue of this travel voucher.	0	1	Formatted Date Time
BBIE	Issuer Company Name	The name, expressed as text, of the company issuing this travel voucher.	0	1	Text
BBIE	Description	The textual description of this travel voucher.	0	1	Text
BBIE	Applicable Indicator	The indication whether or not this travel voucher is applicable.	0	1	Indicator
ABIE	Communication	The exchange of thoughts, messages, or information, as universally exchanged by speech, signals, writing, or behaviour between persons and/or organizations.			
BBIE	Channel Code	The code specifying the channel or manner in which a universal communication can be made, such as telephone or email.	0	1	Communication Channel Code
BBIE	Complete Number	The text string of characters that make up the complete number for this universal communication.	0	1	Text
BBIE	Website URI ID	The Uniform Resource Identifier (URI) of the website for this universal communication.	0	1	Identifier
BBIE	Email URI ID	The Uniform Resource Identifier (URI) of the email for this universal communication.	0	1	Identifier
BBIE	Invalid Indicator	The indication whether or not this universal communication is invalid.	0	1	Indicator
BBIE	Description	The textual description of this universal communication.	0	1	Text
ABIE	Water Source	A place from which water originates such as a hot spring, lake that provides water to public drinking water supplies and private wells.			
BBIE	Name	The name, expressed as text, for this water source.	0	1	Text
BBIE	ID	The identifier of this water source.	0	1	Identifier

Type	Short Name	Definition	Min Occur.	Max Occur.	Data type
BBIE	Category Code	The code specifying the category for this water source.	0	1	Code
BBIE	Characteristic Code	The code specifying the characteristic of this water source.	0	1	Code
BBIE	Marketing Phrase Text	The marketing phrase, expressed as text, for this water source.	0	1	Text
BBIE	Health Benefit Text	The health benefit, expressed as text, for this water source.	0	1	Text
BBIE	Bathing Prohibition Caution Text	The bathing prohibition, expressed as text, for this water source.	0	1	Text
BBIE	Drinking Prohibition Caution Text	The drinking prohibition, expressed as text, for this water source.	0	1	Text
BBIE	Description	The textual description of this water source.	0	1	Text
END					

338 **2.7 Code Lists developed**

339 **Table 2-6 Code lists and values**

Code list and code values	Code list and code values
Cooperating_ Organization. Role. Code	Specified_ Experience Item. Response_ Status. Code
1 - Fund provider	1 - Reserved
2 - Marketing provider	2 - Not reserved
3 - HR provider	3 - Not accepted
4 - Official support	4 - Cancelled
5 - Multiple support provider	5 - Refunded
Disease_ Protection Means. Category. Code	6 - Waiting
1 - Drinking medicine	7 - On request
2 - Vaccinating	Specified_ Experience Item. Status. Code
3 - Wearing	1 - Wide open
4 - Applying ointment	2 - Small number available
5 - Spraying	3 - Not available
Experience Program_ Action. Status. Code	4 - Closed
1 - Sending	Specified_ Experience Item. Theme Type. Code (and Product)
2 - Sent out	1 - Wellness
3 - Re-sending	2 - Adventure
4 - Responding	3 - Sightseeing
5 - Responded	4 - Nature watching
6 - Respond shortly	5 - Religeous experience
7 - Will respond	6 - Historical experience
8 - Respond in a few days	7 - Helitage experience
9 - Respond in a week	8 - Farming experience
10 - Re-responding	9 - Social service experience
11 - Unable to respond	10 - Manufacturing experience
12 - Error transmitted	11 - Fishing experience
13 - Communication in trouble	12 - Business experience
14 - Testing	13 - City life experience
15 - Deleted	14 - Country life experience
Experience Program_ Action. Type. Code	15 - Meditating
1 - Search	16 - Learning
2 - Reserve	Specified_ Feature. Usage. Code
3 - Change	1 - Regional vitalization conscious
4 - Cancel	2 - Environment sustainability conscious

Code list and code values	Code list and code values
5 - Pay	3 - Quality of life improvement conscious
6 - Refund	4 - Wellness conscious
7 - Delete	5 - UN/SDGs, in general, conscious
8 - Respond	6 - The others
9 - Test	Specified_ Guest Arrival. Transport Mode. Code
10 - Act for nothing	1 - Airline
11 - Act invalidly	2 - Railway
Experience_ Facility. Type. Code	3 - Tram
1 - Lodging house	4 - Bus
2 - Guest room	5 - Community bus
3 - Restaurant	6 - Taxi
4 - Meeting room	7 - Private car
5 - Recreation facility	Specified_ Information Source. Category. Code
6 - Business support room	1 - Description
7 - Sightseeing facility	2 - Image
8 - Parking facility	3 - Web site
9 - Bathing facility	4 - Short video
10 - Wellness center	5 - SNS
11 - Meditation center	6 - Short message
Experience_ Product. Applicable Quantity Unit_ Type. Code	7 - Others
1 - Adult	Specified_ Note. Subject. Code
2 - Male adult	1 - Special arrangement
3 - Female adult	2 - General matter
4 - Student	3 - In secrecy
5 - Child	4 - Product related
6 - Infant	5 - Activity/Event related
7 - Room	6 - Optional Product related
8 - Seat	7 - Multiple subject related
9 - A car capacity	Specified_ Period. Start_ Day Of Week. Code
10 - A bus capacity	0 - Sunday
11 - A train capacity	1 - Monday
12 - A table capacity	2 - Tuesday
Guest_ Allergy State. Type. Code	3 - Wednesday
1 - Dust	4 - Thursday
2 - Pollen	5 - Friday
3 - Food	6 - Saturday
4 - Medicine	Specified_ Period. End_ Day Of Week. Code
5 - Animal	0 - Sunday
6 - Tree	1 - Monday
7 - Plant	2 - Tuesday
8 - Atmosphere	3 - Wednesday
Guest_ Carrying Equipment. Type. Code	4 - Thursday
1 - Scuba diving	5 - Friday
2 - Skiing	6 - Saturday
3 - Mountain climbing	Specified_ Period. Minimum_ Duration. Measure
4 - Rock climbing	1 - Operating for a day
5 - Skating	2 - Operating for a week
6 - Cycling	3 - Operating for a month
7 - Wild life watching	4 - Operating for 3 months
Guest_ Disability State. Type. Code	5 - Operating for 6 months
1 - Walking disability	7 - Operating for a year
2 - Viewing disability	Specified_ Period. Maximum_ Duration. Measure

Code list and code values	Code list and code values
3 - Hearing disability	1 - Operating for a day
4 - Speaking disability	2 - Operating for a week
5 - Multiple disability	3 - Operating for a month
6 - Other disability	4 - Operating for 3 months
Guest_ Food Choice. Type. Code	5 - Operating for 6 months
1 - Vegetarian food	7 - Operating for a year
2 - Vegan food	Trade_Contract. Automatic Extension_Period. Code
3 - Meat based food	1 - 1 year
4 - Fish based food	2 - 0.5 year
5 - Halal food	3 - 1 month
6 - Fasting based food	Specified_Period. Purpose. Code
7 - No special choice	1 - Sales period
Guest_ Health Indication. Type. Code	2 - Trial period
1 - Normal	3 - No sales period
2 - Excellent	4 - Operation period
3 - Good	5 - No operation period
4 - Poor	Specified_Requirement. Type. Code
5 - Other	1 - Buyer response requested
Personal_ Language Proficiency. Language. Code	2 - Vaccination proof
- See UNECE ISO 639-1 2A language codes	3 - Guest carrying items
Personal_ Language Proficiency. Speaking Level. Code	Specified_Route. Security Level. Code
1 - Native language only	1 - Ordinary
2 - English somewhat available	2 - GPS or map needed
3 - English available	3 - Caution needed
4 - Local language available	4 - Experience needed or guide assistance preferable
Guest_ Person. Gender. Code	5 - Dangerous
1 - Male	Specified_Route. Status. Code
2 - Female	1 - Existing
3 - X-gender	2 - Planned
4 - Not shown	3 - Under construction
Guest_ Person. Role. Code	4 - Closed
1 - Leader	Trade Settlement_Payment Means. Type. Code
2 - Member	10 - In cash
Guest_ Person. Title. Code	20 - Cheque
1 - Mr.	42 - Payment to a bank account
2 - Mrs.	48 - Bank Card
3 - Ms	54 - Credit Card
4 - Dr.	68 - Online Payment Service
5 - Master	1 - Financial institution
6 - Not specified	2 - Financial card
Payment_ Financial Account. Currency. Code	3 - Digital method
- See UNECE/ISO 4217 Currency code list	4 - Voucher
Payment_ Trade Settlement. Payment_ Currency. Code	5 - Check
- See UNECE/ISO 4217 Currency code list	6 - Coupon
Payment_ Trade Settlement. Priority. Code	7 - Cash
1 - Top priority	Trade_Party. Role. Code
2 - Second priority	11 - Travel Company (Agent)
3 - Last priority	21 - Supplier
Payment_ Trade Settlement. Reason. Code	22 - EPs information supplier
1 - Normal payment	23 - EPs product and information supplier
2 - Delayed payment	24 - EPs operator
3 - Penalty payment	25 - EPs wholesaler

Code list and code values	Code list and code values
4 - Deficit payment	Trade_ Party. Type. Code
5 - Refunded	BY - Buyer
Payment_ Trade Settlement. Status. Code	SE - Seller
1 - Fully paid	IB - Intermediary
2 - Not yet paid	PR - Payer
3 - Partly paid	Trade_ Price. Bracket_ Type. Code
4 - No payment needed	1 - Single room or equivalent space plus breakfast and dinner
Pet_ Animal. Category. Code	2 - Twin room or equivalent space plus breakfast and dinner
1 - Dog	3 - Family room plus breakfast and dinner
2 - Cat	Trade_ Price. Determination. Code
3 - Bird	1 - No Show
4 - Rabbit	2 - Cancelled on check-in date
5 - Mouse	3 - Cancelled up to 1 day prior to check-in date
Special_ Query. Response_ Status. Code	4 - Cancelled up to 2 days prior to check-in date
5 - Responded	5 - Cancelled up to 3 days prior to check-in date
6 - Respond shortly	6 - Delayed without notice
7 - Will respond	7 - Cancellation by supplier
8 - Respond in a few days	8 - Natural disaster
9 - Respond in a week	9 - Pandemic
11 - Unable to respond	10 - Accident
14 - Testing	Trade_ Price. Reason. Code
Specified_ Certificate. Category. Code	1 - Early bird
1 - Scuba diving	2 - Silver age
2 - Skiing	3 - Gender
3 - Mountain climbing	4 - Continuous multiple stays
4 - Rock climbing	5 - Member
5 - Car driving	6 - Birthday
6 - Cooking	7 - Child
7 - English Language	8 - More than limited number
8 - Caring	9 - Certificate holder
9 - Travel operation	10 - Equipment holder
10 - Travel managing	11 - Insurance holder
Specified_ Certificate. Purpose. Code	12 - Frequent guest
1 - To show that the corporate or a person satisfies the legal requirements	13 - Cancellation by supplier
2 - To show that the corporate or a person is eligible for the service	14 - Natural disaster
3 - To do business based on government safety guidelines	15 - Pandemic
Specified_ Certificate. Type. Code	16 - Labour strike
1 - Licence	17 - Accident
2 - Certificate	13 - Memorial day
3 - Permit	Trade_ Price. Type. Code
Specified_ Customer Class. Category. Code	1 - Dynamic price
1 - Independent person	2 - Basic price
2 - Couple members	3 - Extra price
3 - Family members	4 - Discount price
4 - Group members	5 - Service price
Specified_ Customer Class. Gender. Code	6 - Tax
1 - Male	7 - Cancellation price
2 - Female	8 - Refund price
3 - X-gender	9 - Commission price
4 - Not shown	10 - Penalty price

Code list and code values	Code list and code values
Specified_ Customer Class. Meal Service _ Category. Code	Trade_ Tax. Category. Code
1 - Meal not inclusive	1 - Tax total
2 - All meals inclusive	2 - Sales tax
3 - Breakfast inclusive	3 - Hotel tax
4 - Breakfast and dinner inclusive	4 - Hot spring bathing tax
5 - Other	5 - Airport usage tax
Specified_ Experience Item. Category. Code	Trade_ Tax. Type. Code
1 - EPs Product	1 - Government tax
2 - Activity/Event	2 - Local government tax
3 - Optional EPs Product	3 - Sub-local government tax
4 - Guide	Universal_ Communication. Channel. Code
5 - Coordinator	1 - Telephone
6 - Instructor	2 - Faximile
Specified_ Experience Item. Applicable Quantity Unit_ Type. Code	3 - e-mail
1 - Adult	4 - Letter
2 - Male adult	5 - Short message
3 - Female adult	Water_ Source. Category. Code
4 - Student	1 - Hot spring source
5 - Child	2 - Water source
6 - Infant	Values of below code lists not yet fixed
7 - Room	Payment_ Cash. Type. Code
8 - Seat	Payment_ Cheque. Type. Code
9 - A car capacity	Payment_ Coupon. Type. Code
10 - A bus capacity	Payment_ Digital Method. Type. Code
11 - A train capacity	Travel_ Voucher. Type. Code
12 - A table capacity	Trade_ Price. Ranking. Code
Values of below code lists not yet fixed	Trade Settlement_ Financial Card. Type. Code
Specified_ Feature. Type. Code	Payment_ Financial Institution. Type. Code
Trade_ Price. Ranking. Code	Payment_ Financial Account. Type. Code

340

341 END